

PRO-RGBW/ONE



RGBW outdoor lamp with integrated control unit.
Power supply 230Vac, 24W.
433.92 MHz receiver for radio transmitters.
Wi Fi connection for «OneSmart» application

INDEX

1 - PRODUCT FEATURES	
1.1 - TECHNICAL DATA	page 3
2 - CONNECTION DIAGRAMS	page 4
3 - USE OF THE CONTROL UNIT	
3.1 - TYPICAL INSTALLATION	page 4
3.2 - USE VIA RADIO	page 5
3.3 - USE WITH SMART PHONE APPLICATION	page 5
3.4 - USE WITH VOICE CONTROL	page 5
4 - CONTROL BY RADIO TRANSMITTERS	
4.1 - RADIO TRANSMITTER SETTING	page 6
5 - CONTROL WITH APP ONE SMART	
5.1 - APP ONE SMART CONNECTION	page 8
5.2 - USE OF THE APP ONE SMART	page 9
6 - CONTROL BY VOICE COMMANDS	
6.1 - CONNECTION TO THE APP "GOOGLE HOME"	page 10
6.2 - CONNECTION TO THE APP "AMAZON ALEXA"	page 12

1 - PRODUCT FEATURES

1.1 TECHNICAL DATA

LIGHTING FIXTURE

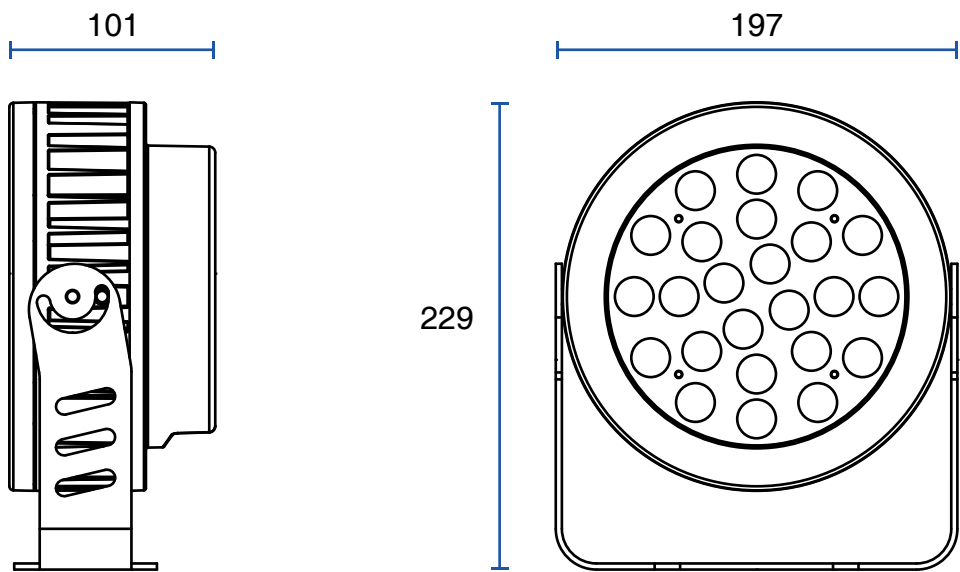
Power supply	230Vac
Power	24W
Light type	RGBW
Beam angle	60°
IP rating	IP66

INTEGRATED CONTROL UNIT

N° of programmable transmitters	30
RF receiver frequency	433.920MHz
WiFi frequency	2.4GHz
Working temperature	-20° +55°

TRANSMITTER LINEA-1DIM

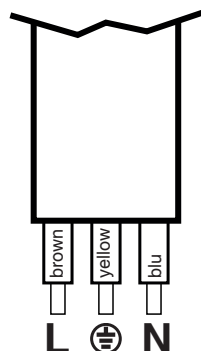
Power supply	Battery CR2032
Range	5/10m
RF receiver frequency	433,92MHz



2 - CONNECTION DIAGRAMS

RECOMMENDATIONS

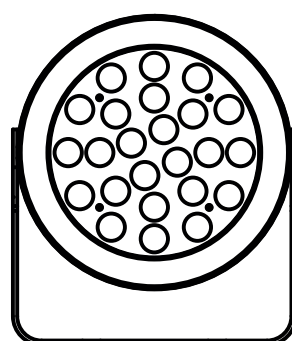
- Installation must be carried out only by professional technicians in accordance with the applicable electrical and safety regulations.
- All connections shall be operated without electrical voltage.
- Use proper cables.
- Don't cut the antenna
- Provide in the power line with an appropriate disconnection device
- Dispose of waste materials in full compliance with local law.



3 - USE OF THE CONTROL UNIT

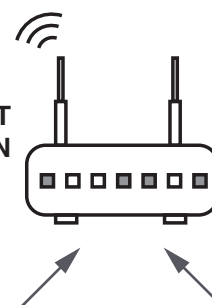
3.1 TYPICAL INSTALLATION

The system can be controlled by radio commands, smartphone App OneSmart or voice commands.



NEXTA CONTROL UNIT

ROUTER WITH INTERNET CONNECTION



RADIOTRANSMITTER CONFIGURATION

See paragraph 4

APP CONTROL CONFIGURATION

See paragraph 5



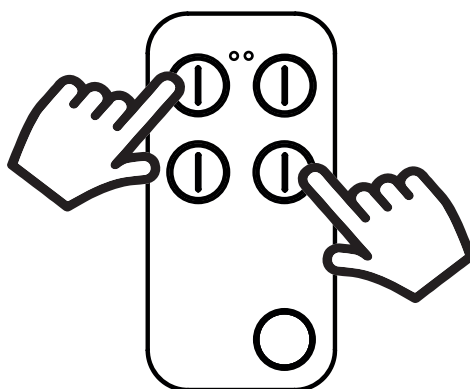
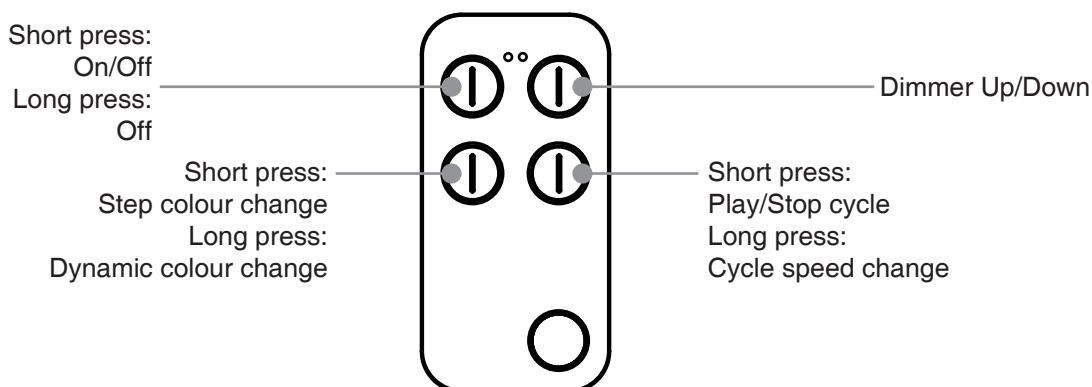
VOICE CONTROL CONFIGURATION

See paragraph 6

3.2 USE VIA RADIO

To control the light via radio, the already associated Linea transmitter (supplied with the kit) can be used, to add transmitters, carry out the association procedure, see paragraph 4.

FUNCTION OF THE KEYS OF THE TRANSMITTER SUPPLIED WITH THE KIT AND ALREADY ASSOCIATED



P1+P4 with light on= Colour memo
P1+P4 with light off= Deactivated colour memo

Colour memo: the colour memo function allows you to store a colour that will be used for all ignitions. By deactivating the function, however, the light will switch on at the last value before it was switched off.

3.3 USE VIA SMARTPHONE APP ONESMART

The configuration procedures described in paragraph 5 above must be followed to control the lights by smartphone App.

3.4 USE WITH VOICE CONTROL

The configuration procedures described in paragraph 6 above must be followed to control the lights by voice commands.

4 - MANAGEMENT WITH REMOTE CONTROL

This procedure lets you programme compatible multifunctional or generic (Wireless bus) transmitters.

To proceed with programming it is necessary:

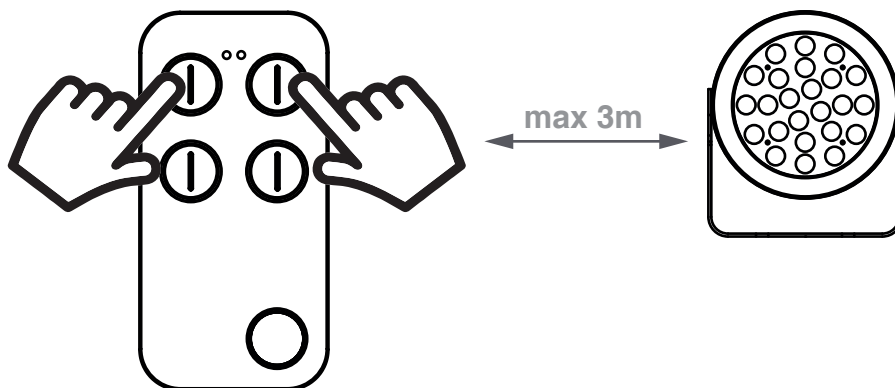
- be near the powered spotlight
- have the «Linea Master» remote control supplied with the kit

4.1 - RADIO PROGRAMMING

This procedure lets you programme compatible multifunctional or generic transmitters.

STEP 1

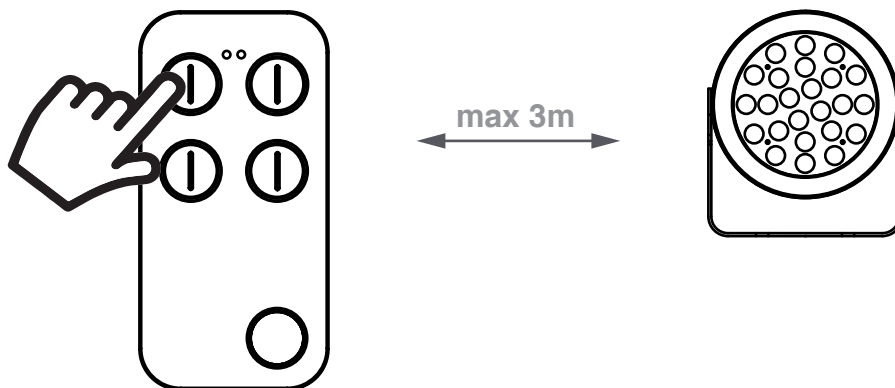
Near the control unit, press buttons 1 and 2 of the Linea remote control already associated until the LED starts Flashing (about 3 seconds).



ACTION: Long press of button 1 and 2 **TX LED:** Flashes

STEP 1

Press the button 1 of the Linea remote control already associated .
The led turns on red.



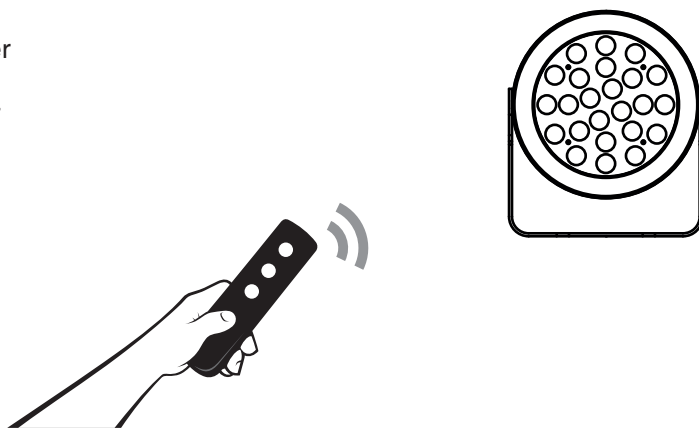
ACTION: Short press of button 1 **TX LED:** Turns on red

STEP 2

Within 60 seconds make a transmission with the transmitter to be saved.

See transmitter manual, the paragraph entitled “transmitter programming” for specify information.

The led makes 3 Flashes and turns off.



ACTION: Make a transmission with the new transmitter **LED:** Flashes 3 times

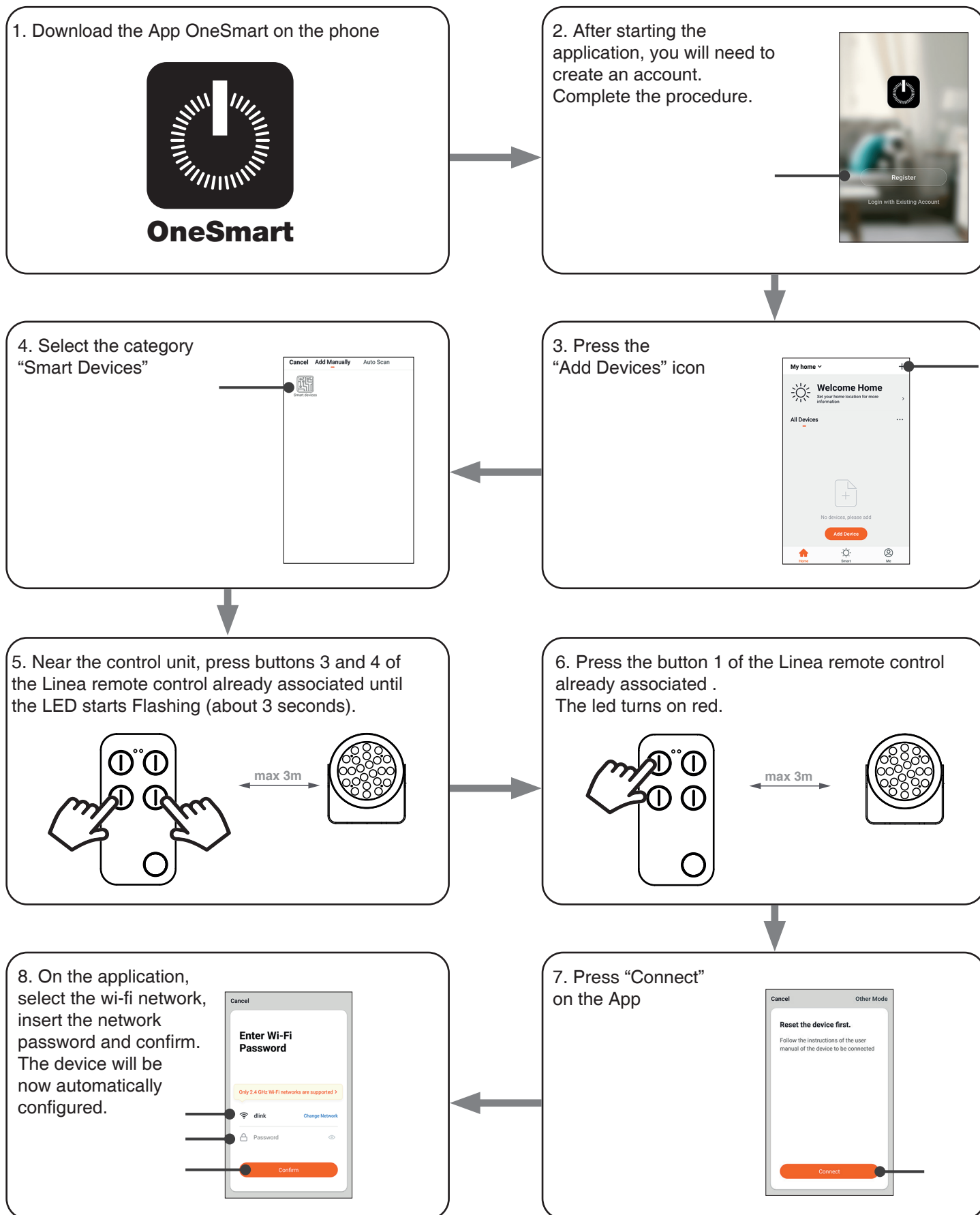
5 - CONTROL WITH APP ONE SMART

These procedures allow you to manage the light from your device (example: mobile phone) through the application and to control the system remotely.

5.1 - APP CONNECTION

This procedure connects the light to the application.

ATTENTION: an internet-based WiFi network is required for the operation.



5.2 - USE OF THE APP ONE SMART

After all the control units have been set up, the installation can be managed by the application.

USE

The “Home” menu (1) shows all the associated devices.
To send a command to a device, select it.

Pressing “Smart” (2) allows you to add actions on your devices according to certain conditions and in certain time intervals, there are two types of actions:

- Automation (3): One or more actions happen if one or more conditions are satisfied
- Tap-to-Run (Scenario) (4): performs one or more actions by pressing an app button

EXAMPLES OF SCENARIOS (TAP-TO-RUN):

- Total off (switch off all the lights in the house)
- Scenario Soft (Dimming the desired lights at low intensity level)

EXAMPLES OF AUTOMATIONS:

- Hourly and weekly programmings
- Turn on the lights at the sunshine, turn off the lights at the sunrise.

Pressing “Me” (5) for entering to home and account settings.

From this menu, you can add members to the home for sharing device management or creating new houses.

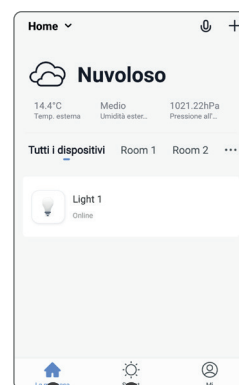
PROCEDURE FOR ADDING NEW USERS/MEMBERS.

1- From the “ME” menu (5), select “Home Management” (7) and then go to the house configurations and find “Add Member”

2- Insert the “OneSmart” account you want to add (email or mobile phone number of the new member), the new member will receive a notification of the invitation.

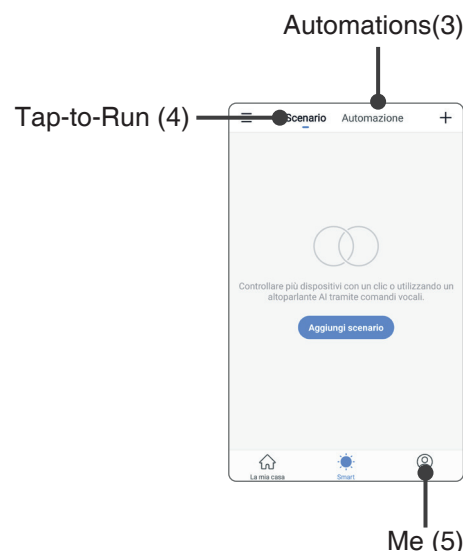
WARNING:

- The new user must have already downloaded the “OneSmart” application and created an account.
- Both the ‘administrator’ and the ‘new user’ must have set the same ‘region’ (Country).
- (Go to “Account (2)-Account and Security-Region” to view and change the set country).



Home (1)

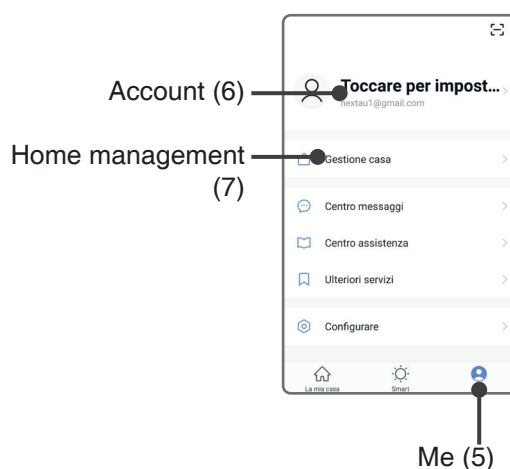
Smart (2)



Automations(3)

Tap-to-Run (4)

Me (5)



Account (6)

Home management (7)

Me (5)

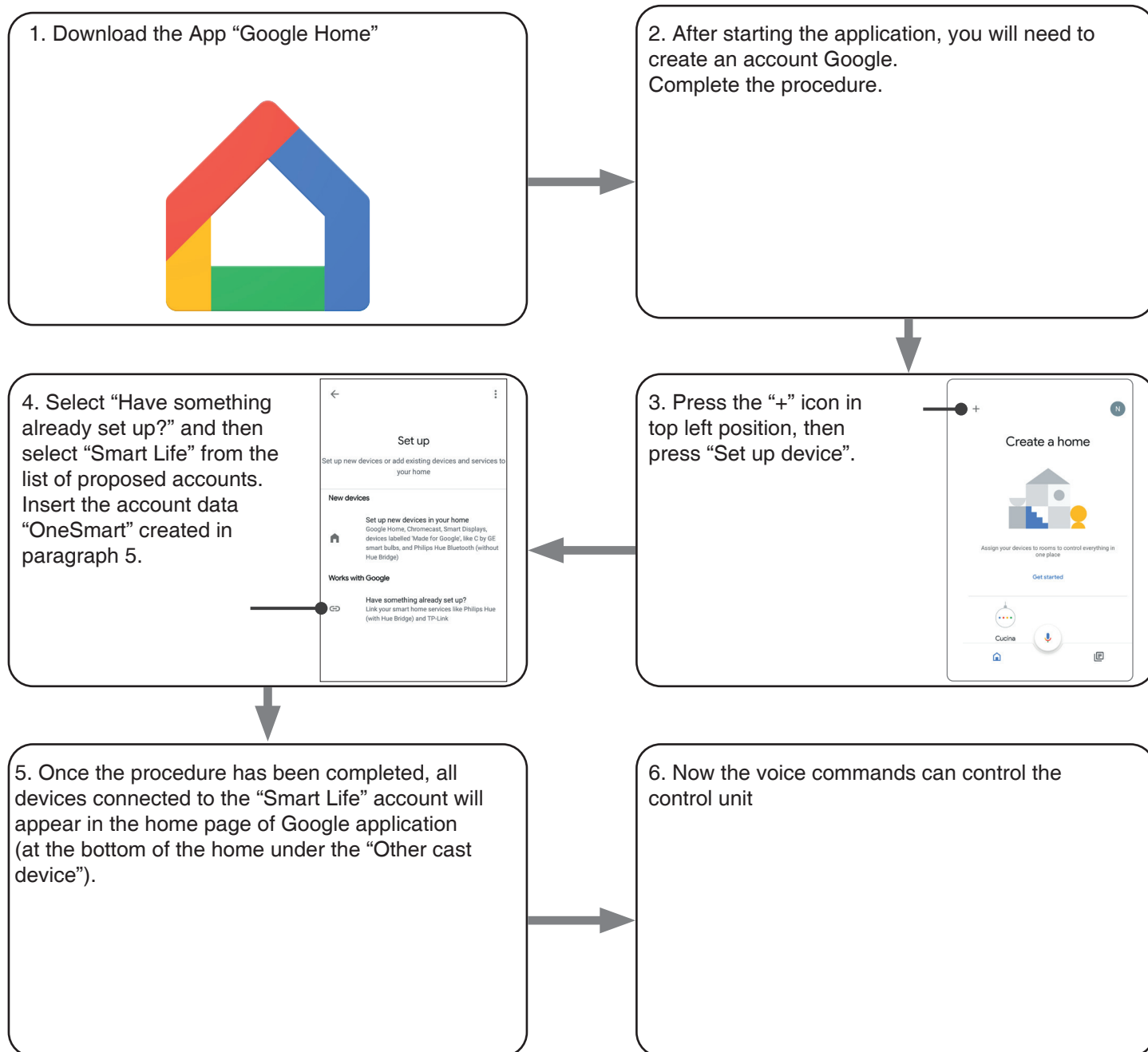
6 - CONTROL BY VOICE COMMANDS

You can use this procedure to associate a “OneSmart” account with a Google or Alexa account to enable the voice commands.

6.1 - CONNECTION TO “GOOGLE HOME”

PROCEDURE

WARNING: before proceeding with this procedure, you must have set up the “OneSmart” account, see paragraph 5.



NOTES:

If you add other devices to your OneSmart application, they will automatically be added to the Google Home page. To use them with voice control, you need to add them to a room in the Google Home application, see step 6 of the procedure.

If devices are not added automatically, disconnect and reconnect your account from step 3 of this procedure from Google Home.

USE OF “GOOGLE HOME”

SENDING VOICE COMMANDS

Using your Android mobile phone (or tablet), voice commands can already be sent via the native assistant.

By using an Apple device, you can use the microphone within the Google Home application. If you want to add a voice recognition device such as “Google Home Mini” or “Google Home”, follow the procedures to match it to the house you created and then they will be associated with the lights.

VOICE COMMAND LIST

Here below there are some examples of dedicated voice commands for lights:

DIMMER / RGB(W) / CCT TUNABLE WHITE

OK Google, Turn on / Turn Off *name of the device* or *name of the room*

OK Google, Turn on / Turn Off the lights

OK Google, set the light to 50%

OK Google, reduce the light

OK Google, turn off all the lights

RGB(W)

OK Google, transforms the light *light name* or *room name* green.

OK Google, set the *light name* or *room name* red

CCT TUNABLE WHITE

OK Google, Hot White

OK Google, Cold White

OK Google, Ancient White

OK Google, Smoke White

OK Google, Phantom White

USE OF ROUTINES

The Nexta control unit is compatible with Google routine.

The Google Home application allows you to create some vocal commands to be associated with one action or sequence of actions.

This allows you to create scenarios, but also allows you to customize the command to get a certain action.

EXAMPLES OF SCENARIOS

OK Google, Dark! Turn off all the lights

OK Google, Movie! Turn off some lights and soft dimming of other lights

EXAMPLES OF CUSTOMIZED COMMANDS

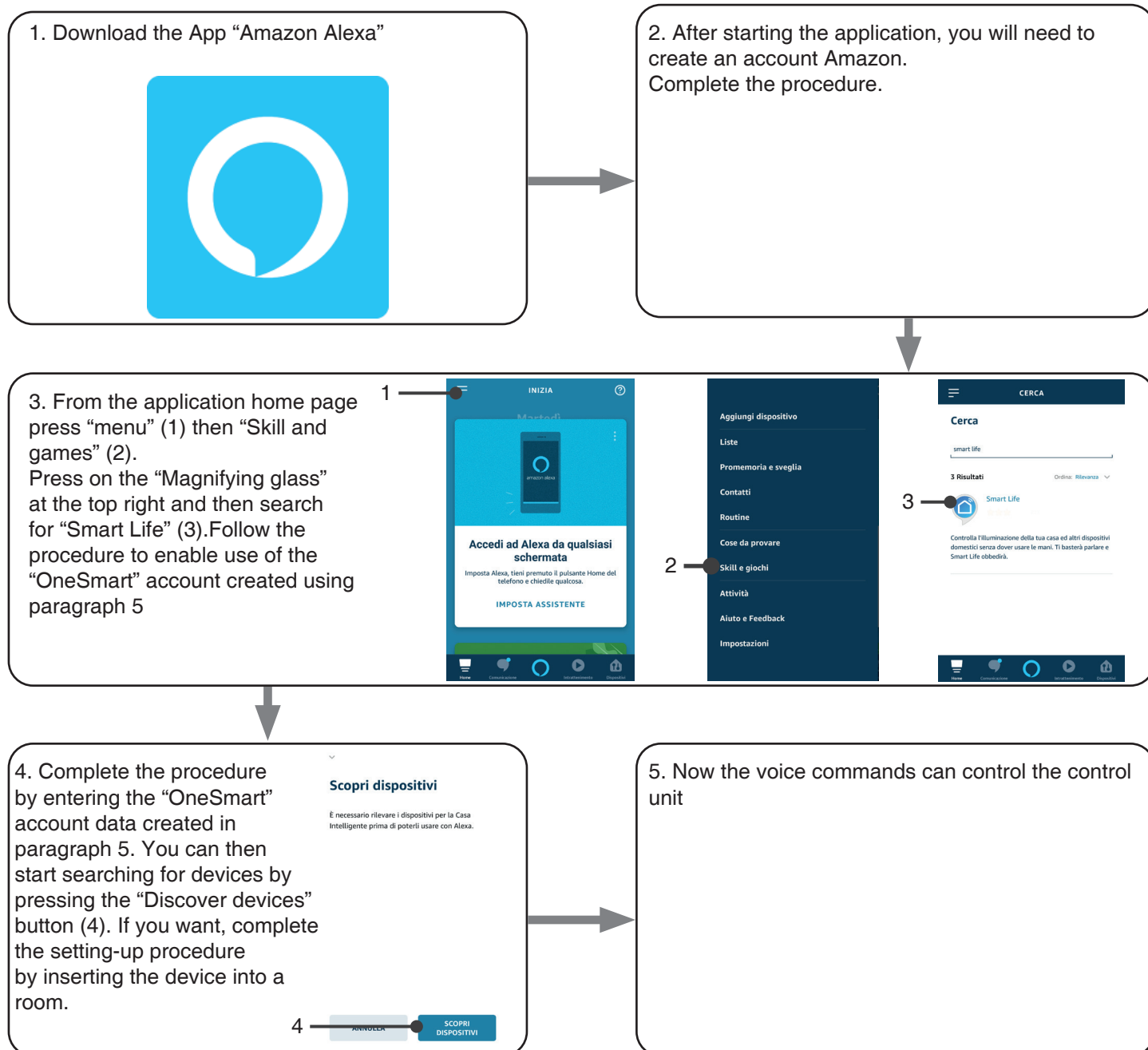
OK Google, Dark! Turn off the light

(corresponds to the native “Turn off *light name*” command)

6.2 - COONECTION TO “AMAZON ALEXA”

PROCEDURE

WARNING: before proceeding with this procedure, you must have set up the “OneSmart” account, see paragraph 5.



USE OF “AMAZON ALEXA”

SENDING VOICE COMMANDS

Using your Android mobile phone (or tablet), voice commands can already be sent via the Amazon Alexa application. Using an Apple device, you can use the microphone inside the Amazon Alexa application. If you want to add a voice-control device like “Echo Dot” or “Echo Plus”, follow the procedures to match it to the house you created, and then they will be associated with the lights.

VOICE COMMAND LIST

Here below there are some examples of dedicated voice commands for lights:

DIMMER / RGB(W) / CCT TUNABLE WHITE

Alexa, Turn on / Turn Off *name of the device* or *name of the room*

Alexa, Turn on / Turn Off the lights

Alexa, set the light to 50%

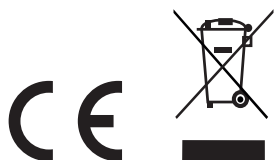
Alexa, reduce the light

Alexa, turn off all the lights

RGB(W)

Alexa, transforms the light *light name* or *room name* green.

Alexa, set the *light name* or *room name* red



V1.0



LEF LIGHTING S.R.L.

Via Rodolfo Morandi 9/11

50019 Sesto Fiorentino

Tel. 055.4217727

Firenze - ITALY

www.lefgroup.com