

PLANO-MASTER



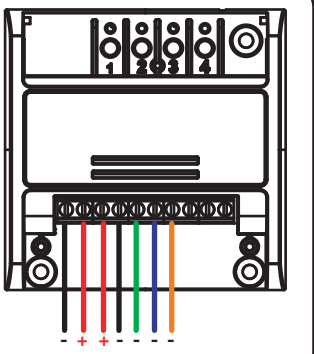
linea

NEXTA
RADIO



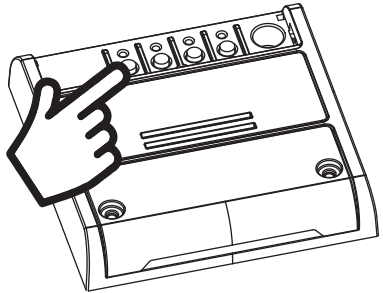
Commissioning guide

1 CONNECTIONS AND LED TYPE SETTING

STEP 1
Connect the lights following the diagrams

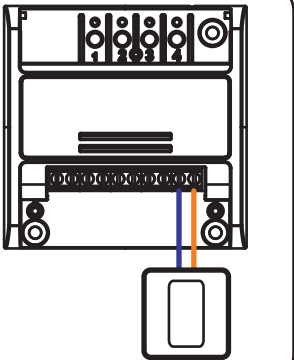


STEP 2
Select the type of light:
Single-color
Led, cct, rgb or rgbw



2 USE VIA WIRE

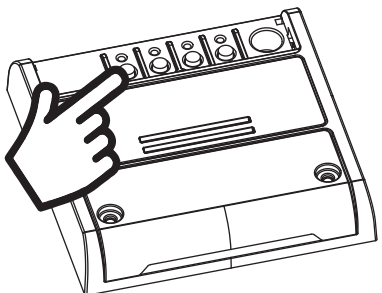
STEP 1
Once the push button is connected, this button is already working.
The function of the button depends on the type of light connected





STEP 2
The functions are:
SHORT PRESSURE:
On/Off
LONG PRESSURE (light on): Dim Up/Down
LONG PRESSURE (light off):
Single-color light: DIM UP
CCT light: Temperature change
RGB/W light: Color Change

3 USE VIA RADIO - ASSOCIATION RECEIVER-TRANSMITTER

STEP 1
Press the button 1



STEP 2
Sending a signal with the radiotransmitter.
Functions change according to the used radiotransmitter



GENERAL INFORMATION FOR APP ONE SMART AND VOICE COMMAND

The control by App and Google or Alexa voice control systems require the creation of accounts that guarantee the security of the system and allow the management of the system.

Accounts are composed of:

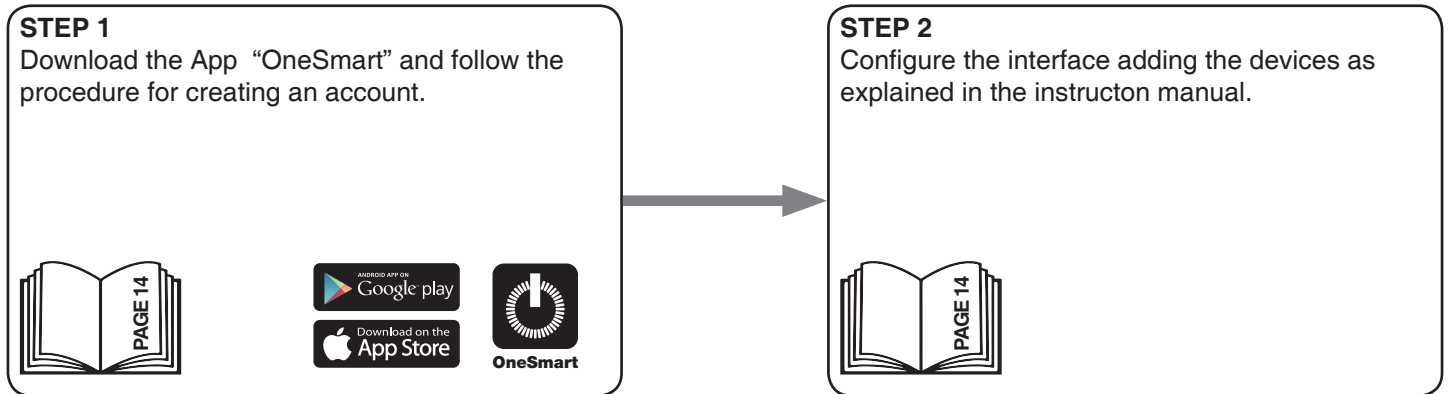
- a valid e-mail address. We'll send email to this address
- a security password

Are required: one account for OneSmart application, one for Google home and one for Alexa.

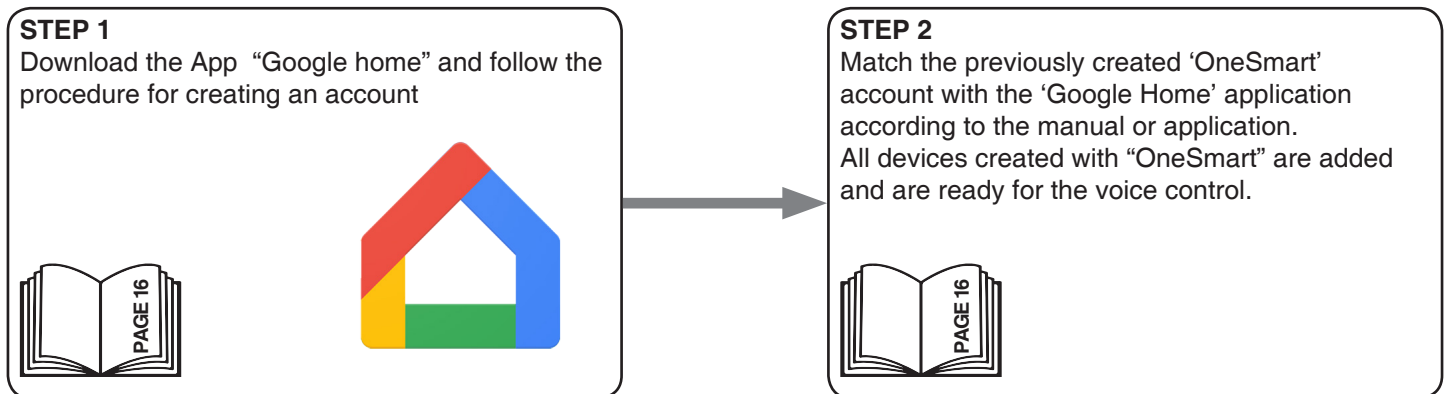
The emails and passwords for these accounts can be the same.

Once the system is configured, device information and commands are stored in a cloud. This allows to manage the system by distance from wherever in the world.

4 CONFIGURATION AND USE OF ONE SMART APP



5 CONFIGURATION AND USE WITH GOOGLE HOME



6 CONFIGURATION AND USE WITH AMAZON ALEXA

