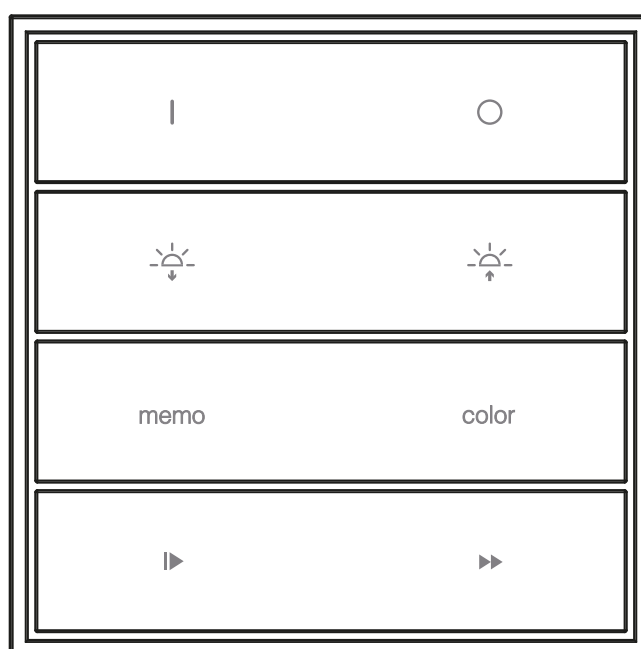


# OPTIMA-1C

MULTIFUNCTIONAL transmitters.  
Pre-assigned key function.

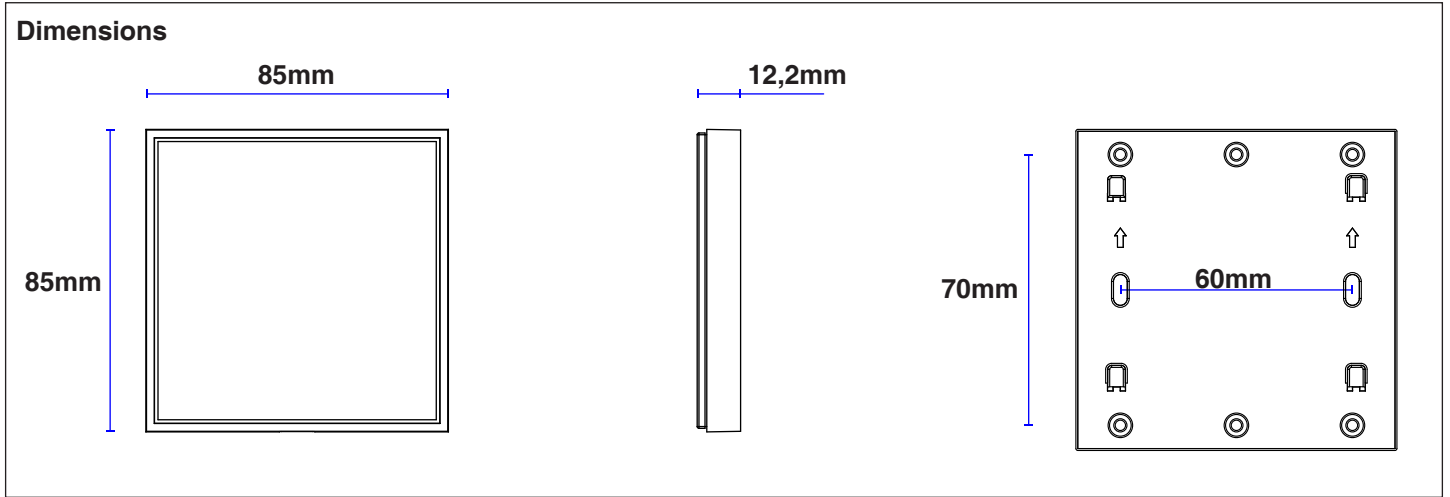


Wall radio keyboard, 1 channels with color functions.  
Power supply with CR2450 battery.

# 1 - PRODUCT FEATURES

## 1.1 TECHNICAL DATA

Power supply	CR2450 Battery
Button number / channels	8 buttons for one RGB/W load
Radio frequency	433.920MHz
Mounting	External
Degree	IP20



## 2 - USE OF TRANSMITTER

### START-UP

- Insert the battery and attach the transmitter to the wall if necessary, see paragraph 3
- Follow the procedure for associate at least one button with a compatible receiver, see at paragraph 4
- Each press of a button will turn on a led between the buttons in the center of the transmitter

**FUNCTION OF THE BUTTON WITH RGB OR RGBW DIMMER CONTROL UNIT**

ICON	SHORT PRESS	LONG PRESS
	On	/
○	Off	/
☾	Step dimmer Down	Graduate dimmer Down
☀	Step dimmer Up	Graduate dimmer Up
memo	Memo color *	/
color	Step change color	Gradual change color
▶	Play/Stop color cycle	/
▶▶	Change speed cycle*	Change cycle effect *

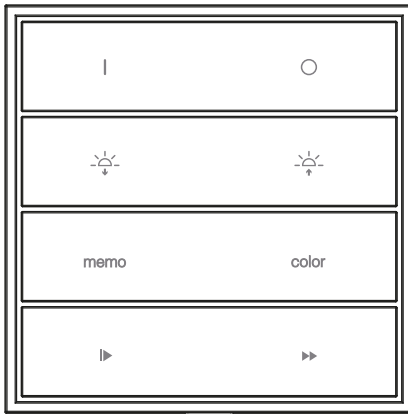
\* Memo color: after sending this command, the control unit will always switch on to the saved color

\* Play/Stop color cycle. Play is signalled by the load Flashing, stop by the load flashing twice.

\* Change speed of cycle. Each time the button is pressed, the transmitter LED emits a number of Flashes equal to the function set (1 Flash= 10sec. / 2 Flashes= 90 sec. / 3 Flashes= 15 minuti / 4 Flashes= 1 hour)

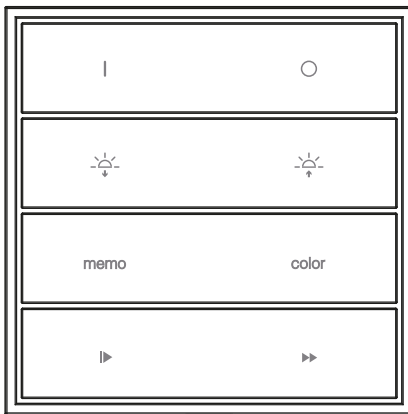
\* Change cycle effect. Each time the button is pressed, the transmitter LED emits a number of Flashes equal to the function set (1 Flash= complete cycle / 2 Flashes = green and blue cycle / 3 Flashes= blue and purple cycle / 4 Flashes= red and orange cycle)

### FUNCTION OF THE BUTTON WITH ON/OFF CONTROL UNIT



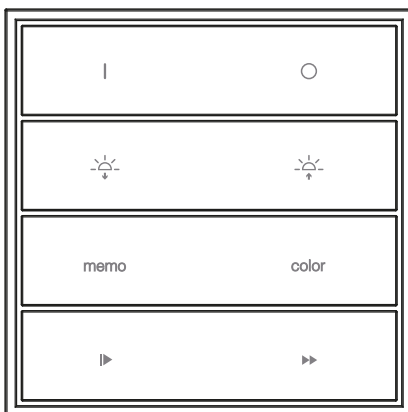
ICON	SHORT PRESS	LONG PRESS
	On	/
○	Off	/
☀-	/	/
☀+	/	/
memo	/	/
color	/	/
▶	/	/
▶▶	/	/

### FUNCTION OF THE BUTTON WITH ONE COLOR DIMMER CONTROL UNIT



ICON	SHORT PRESS	LONG PRESS
	On	/
○	Off	/
☀-	Step dimmer Down	Graduate dimmer Down
☀+	Step dimmer Up	Graduate dimmer Up
memo	/	/
color	/	/
▶	/	/
▶▶	/	/

### FUNCTION OF THE BUTTON WITH TUNABLE WHITE CONTROL UNIT



ICON	SHORT PRESS	LONG PRESS
	Step dimmer Down	/
○	Step dimmer Up	/
☀-	Memo color *	Graduate dimmer Down
☀+	Dimmer Up a step	Graduate dimmer Up
memo	Memo colore	/
color	Step change light temp.	Gradual change light temp.
▶	Play/Stop color cycle	/
▶▶	Change speed cycle*	/

\* Memo color: after sending this command, the control unit will always switch on to the saved color

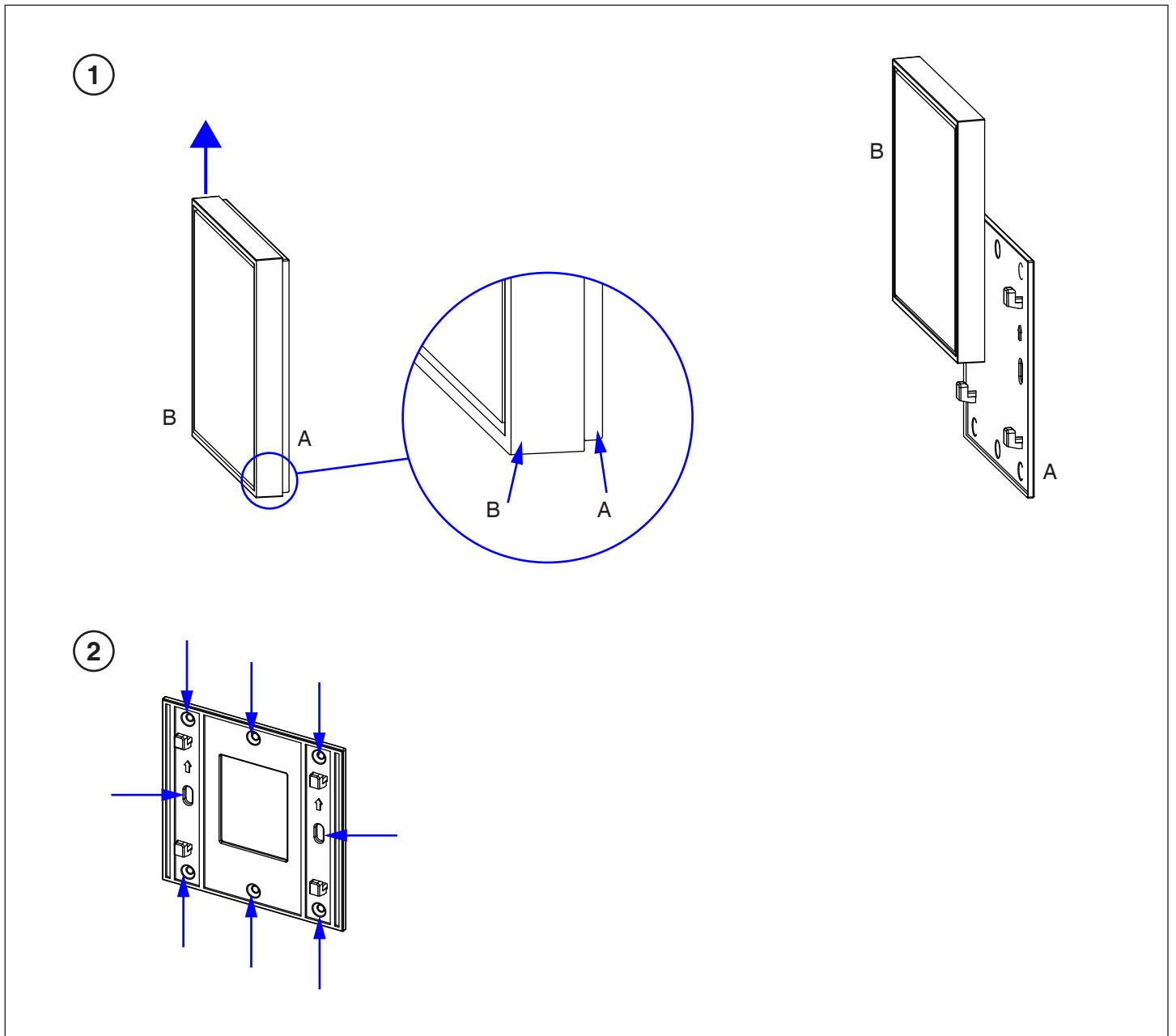
\* Play/Stop color cycle. Play is signalled by the load Flashing, stop by the load flashing twice.

\* Change speed of cycle. Each time the button is pressed, the transmitter LED emits a number of Flashes equal to the function set (1 Flash= 10sec. / 2 Flashes= 90 sec. / 3 Flashes= 15 minuti / 4 Flashes= 1 hour)

### 3 - INSTALLATION

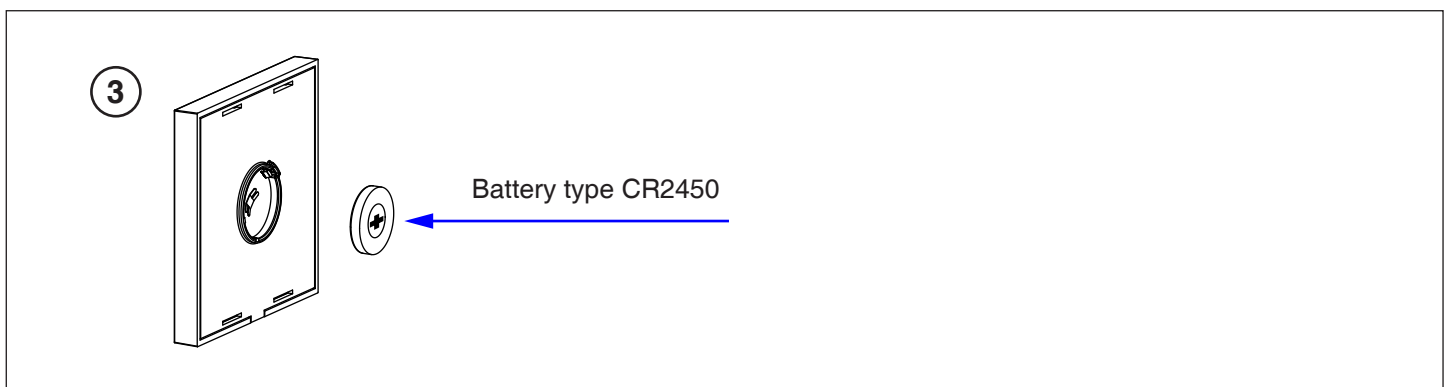
1 - Open the transmitter while holding the base 'A' and pushing the front 'B' upwards (Fig. 1)

2 - If necessary, fix the transmitter using the designated locations (Figure 2). Use the screws provided or watch for the cladding of the screw head.



### BATTERY REPLACEMENT

The battery is of type CR2450. Respect the polarity by turning the battery with the "+" to the outside of the transmitter (fig.3)



## 4 - TRANSMITTER PROGRAMMING

To use the transmitter at least one button (or channel) must be programmed (paragraph 3.1).

### 4.1 TRANSMITTER PROGRAMMING

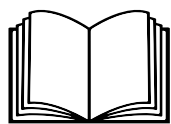
Default: no channel programmed.

This procedure is used to programme a channel in order to then associate it with a compatible receiver. Access to the receiver is required to carry out the following procedure.

#### PROCEDURE

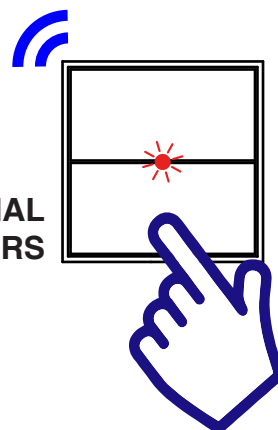
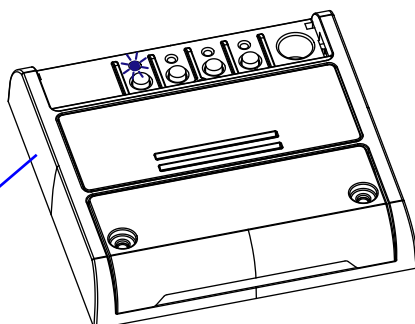
1. Activate the receiver on which you want to use the transmitter in “radio programming of generic transmitters” mode and select the function that you want to associate with the key (see receiver manual).

2. Press the desired key on the transmitter, the receiver’s LED flashes three times to signal it has been received.



Please read the recipient’s manual, “radio programming”.

The control unit in the image is for example only.



**MULTIFUNCTIONAL  
TRANSMITTERS**

**ACTION:** Send a command from the transmitter  
**RECEIVER LED:** Flashes 3 times

## **5 - DELETION OF A CHANNEL**

This procedure is to delete one of the transmitter's channels from the memory of the receiver on which it was programmed.

### **PROCEDURE:**

1- Access the receiver and carry out the "delete single transmitter" procedure (see receiver manual).



CE



V1.0

**LEF**  
*Lighting*

**LEF LIGHTING S.R.L.**

Via Rodolfo Morandi 9/11

50019 Sesto Fiorentino

Tel. 055.4217727

Firenze - ITALY

[www.leflighting.it](http://www.leflighting.it)