

# USER GUIDE

## MAT4-DALI

Microprocessor self-test module



The MAT4 DALI module, equipped with sophisticated microprocessor module, is pre-programmed to carry out testing automatically. Connecting MAT4 module to emergency kit predisposed (see table), obtain a **localized system** which information, on the functionality, are provided by three-colour led, positioned on the lamp. The MAT4 module is designed to be connected via "two wire DALI BUS" to a DALI central control unit. The result is a centralized system for full supervision of the whole system.

### LOCALIZED SYSTEM: ROUTINE

**Function test** - Every 7 days it carries out so automatic ignition of the lamp for about 30 seconds and checks its functionality.

**Duration test** - Every 52 weeks it carries out in automatic mode the lighting of the lamp for 1 or 3 hours and check the battery efficiency (selection via JUMPER).

### ROUTINE START-UP

MAT4 module starts routine test when emergency kit is connected to the battery and mains supplied.

The indicator LED flashes yellow for 24 hours and indicates successful startup. After 15 minutes from start it carry out a short lamp test of 30sec.

After 24 hours of continuous charge routine is terminated and it carry out a duration test. The LED is green blinking for all duration of the test.

At the end if the test passes, the LED is yellow blinking for 24h till the full charge of battery.

### RESET

System reset itself:

- after more than 4 hours of no mains;
- removing mains supply and battery.

### NOTE: CARRYING OUT TEST

*Localized system*

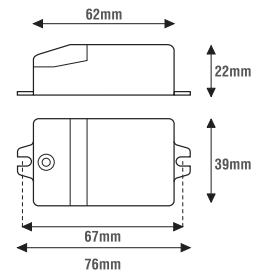
If more MAT4 starts simultaneously the tests could be carried out with little different time.

Random execution of tests minimizes the possibility of having all the batteries discharges in the event of a black-out immediately after an autonomy test.

KIT di Emergenza collegabili Connectable Emergency KIT
LE6071
LE6171BB
LET6071
LE5041
LE5071/3
LE20071
LET20071

### Reference Standards

EN 62386-202



### DALI CENTRALIZED SYSTEM

When connected to a DALI system, the module executes the commands set by the system.

### TECHNICAL FEATURES

BUS DALI output voltage 16 ÷ 20,5Vdc

This device can perform diversified checks, periodically, automatically and autonomously. By connecting this product to the prepared emergency KIT you get a localized system whose information on the functionalities are indicated by a bright 3-color LED. This module can be connected via the DALI BUS to a DALI control unit.

3-pole connection cable, length 30cm (included)

4-pole connection cable, length 30cm (included)

3-pole cable with three-colour LED (red, green and yellow)

Operating ambient temperature Ta -10°C ÷ +50°C

COLOR	LED	STATUS
Yellow	Blinking	Battery charging: - for 24 hours after the first installation or after a reset, for another 24h after the duration test; - after a full discharge
Green	Single blink	Lamp test in progress
Green	Double blink	Battery test in progress
Green	Permanent	All ok
Red	Single blink	Test lamp fault
Red	Double blink	Test battery fault
---	Off	No mains - Battery disconnected

### General Characteristics

Plastic case

Device for independent mounting

Protection degree IP20

Electric class protection III

### Installation

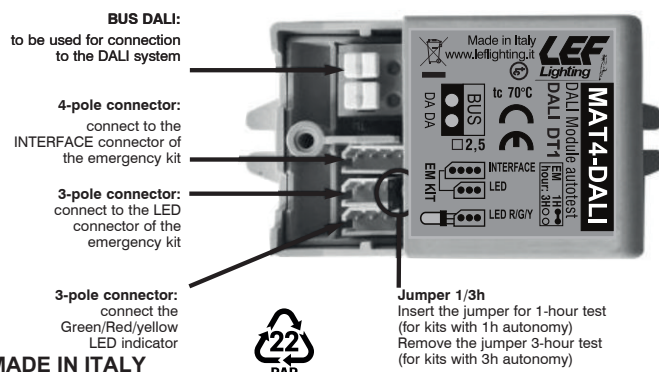
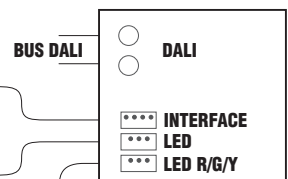
Remove the two-pole cable with the green LED from the emergency kit.

Connect the MAT4 to the emergency kit by inserting the connector 4-pole in the "interface" socket and the 3-pin connector in the "LED" socket on the emergency kit.

4-pole cable to be connected to the INTERFACE connector of the emergency KIT

3-pole cable to be connected to the connector with LED of the emergency KIT

3-pole cable with red/green/yellow LED

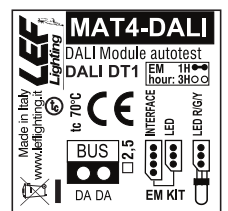


### ATTENTION!

IN ORDER TO PREVENT INTERFERENCES WITH MAT4, INSIDE THE LUMINAIRE THE LED AND 4 POLE CONNECTOR CABLES SHOULD BE LAID AS FAR AS POSSIBLE FROM LAMP CABLES, SHOULD NOT RUN PARALLEL TO LAMP CABLES AND MAY CROSS WITH THEM ONLY AT A RIGHT ANGLE.



www.lef-lighting.it



[AA] Rev. v2.10 18/02/2022

MADE IN ITALY



LEF LIGHTING S.R.L. | www.lef-lighting.it

Via Rodolfo Morandi, 9/11 - 50019 Sesto Fiorentino (FI) - ITALY | Tel +39 055 421 77 27 - Fax +39 055 425 44 92