

# USER GUIDE LESMHFS

High frequency motion sensor (HF) with relay output



www.leflighting.it

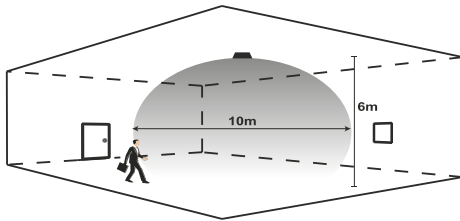
## General Characteristics

Plastic case  
4 wires system  
Protection degree IP20  
This sensor can be installed in non-metallic surfaces, such as plastic and glass

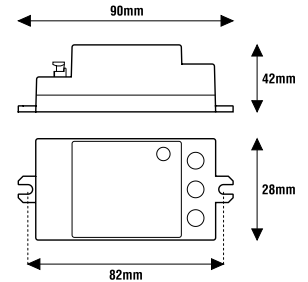
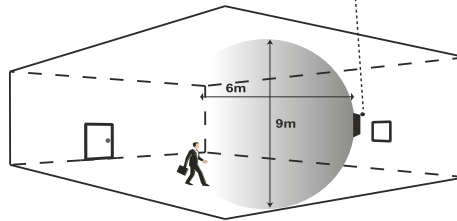
## Reference Standards

EN 60669-1  
EN 60669-2-1  
EN 61347-2-11  
EN 62479

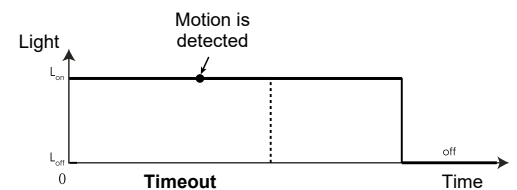
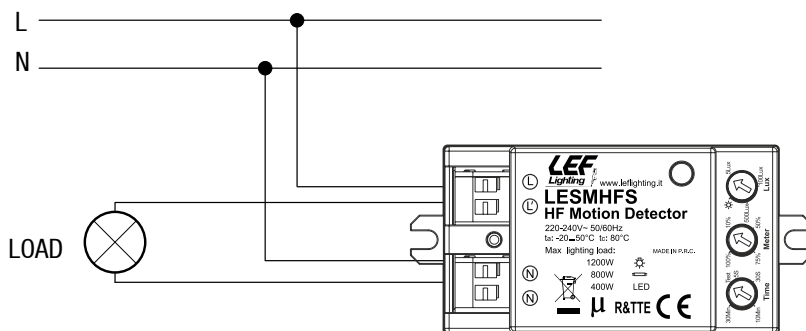
### Ceiling mounting



### Wall mounting



CODICE CODE	Funzione Function	RESISTIVO RESISTIVE Lampade ad incandescenza Incandescent lamps	RESISTIVO RESISTIVE Lampade alogene Halogen lamps	INDUTTIVO INDUCTIVE Trasformatore lamellare Laminated transformer	INDUTTIVO INDUCTIVE Trasformatore toroidale Toroidal transformer	Alimentatore elettronico con lampade ad incandescenza o alogene Electronic driver with incandescent or halogen lamps	Alimentatore elettronico con lampade LED dimmerabili Electronic driver with dimmable LED lamps	Alimentatore elettronico dimmerabile con uscita in CC/CV per LED Dimmable electronic driver with CC/CV output for LED	Lampade fluorescenti compatte dimmerabili Dimmable compact fluorescent lamps	Lampade LED dimmerabili Dimmable LED lamps	Moduli LED dimmerabili Dimmable LED modules Seoul ACRICH	Peso Weight (g)
LESMHFS	RELÈ	230Vac	230Vac	230/12Vac	230/12Vac	230/12Vac	230/12Vac	230/12Vac	230Vac	230Vac	230Vac	60



Timeout would restart counting whenever motion is detected

## Technical Features

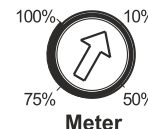
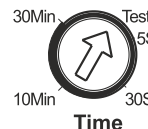
Input voltage range 220-240Vac  
Input frequency 50÷60Hz  
**High frequency motion sensor with microwave (HF) with timer switch function (5 sec ÷ 30 min)**  
Transmission frequency 5,8 Ghz  
Low power transmission (< 0,2mW)  
Adjustable daylight sensor threshold (5÷2000lux)  
Viewing angle 360°  
Wide adjustable detection area (10m)  
Maximum height of installation (6m)  
Consumption in stand-by < 0,5W  
Operating ambient temperature Ta -25°C ÷ +50°C  
Max operating temperature on case 80 °C

**Time:** Timeout regulation

**Meter:** Detection area

**Lux:** Daylight threshold

☀️: Ambient light detection deactivated (2000 Lux)



- Factory settings: 30S, 100%, ☀️

- When the "Timeout" parameter is set to "Test", regardless of ambient brightness, each motion detection involves the light turns on for 2 seconds, and then turns off for 2 seconds.

### ATTENTION:

The installation of the product must be followed by qualified personnel.  
If the product is used for purposes other than the original ones or if it is connected incorrectly, LEF Lighting S.R.L. will not accept any responsibility for damages caused.



PRODUCT TO BE DISPOSED DIFFERENTLY FROM URBAN WASTE  
AEE identification nr.IT1804000010321

MADE IN P.R.C.