

General Characteristics

Built in mounting type ballast
Electric protection class I
Filled with polyester resin

Technical Features

Input voltage range 220-240Vac
Input frequency 50Hz
Reattore a 2 poli
Energy efficiency ratio (EEI): A2
Winding in class H
Maximum working temperature max 130°C

Reference Standards

EN 55015
EN 60923
EN 61000-3-2
EN 61347-1
EN 61347-2-9
EN 62442-2

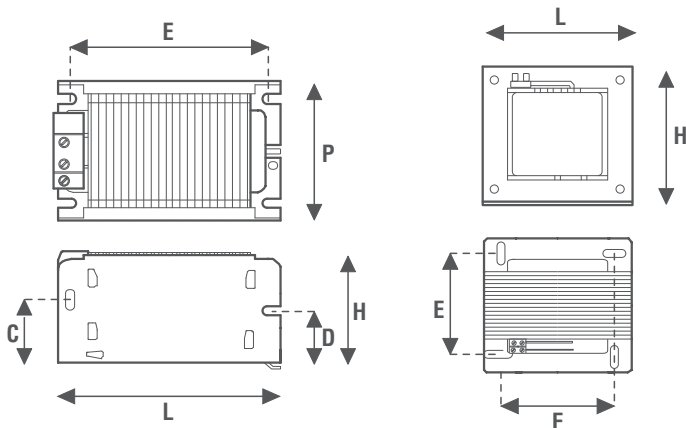
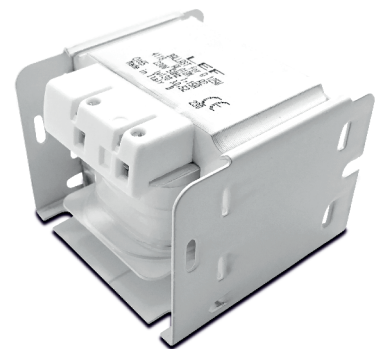
Caratteristiche Costruttive

Alimentatore da incorporare
Classe elettrica di protezione I
Impregnazione in resina poliester

Caratteristiche Tecniche

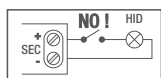
Tensione di ingresso 220-240Vac
Frequenza di ingresso 50Hz
Reattore a 2 poli
Indice di efficienza energetica (EEI): A2
Avvolgimento in classe H
Temperatura massima di funzionamento 130°C

Norme di Riferimento



Disegno tecnico
Technical drawing

Disegno tecnico
Technical drawing

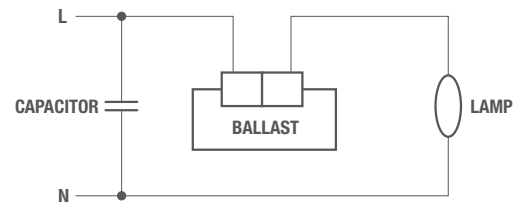


Alimentatore non idoneo per il funzionamento a vuoto
Power supply not suitable for no-load operation

Wiring diagrams



Schema elettrico



**Lampada a Ioduri | Metal halide lamps
***Lampada al Sodio | Sodium lamps

CODICE CODE		Tensione di ingresso Input voltage (Vac)	Frequenza di rete Input frequency (Hz)	Potenza lampada Power lamp (W)	Corrente lampada Current lamp (A)	Δt (°C)	Condensatore Capacitor		Accenditore Ignitor (CODE)	Dimensioni Dimensions (mm)						Peso Weight (g)	
senza termica no thermoprotected	con termica thermoprotected						(μF)	(CODE)		L	P	H	C	D	E		F
AL007SI	AL007SI/T	220-240	50	70	1,00	70	12	CPI12C	ACCAP3** ACCAP6***	74	72	58	32	29	63	56	1300
AL010SI	AL010SI/T			100	1,20					103	72	58	32	29	63	56	
AL015SI	AL015SI/T			150	1,80	70	20	CPI20C	ACCAP3	132	72	58	32	29	63	56	2950
AL025SI	AL025SI/T			250	3,00	75	30	CPI30C		122	99	100		106	73	4250	
AL040SI	AL040SI/T			400	4-4,45	75	50	CPI50C		140	99	100		130	73	6200	
AL060SI				600	6,20	70	60	2xCPI30C		134	152	100		110	125	10900	
AL100SI				1000	10,30	70	100	2xCPI50C	ACCAP7	127	122	100		106	99	7500	
AL101SI				1000	8,20	70	65	1XCPI30C 1XCPI35C		ACCAP2	134	152	100		110	125	10900
AL102SI				1000	9,50	70	85	1XCPI50C 1XCPI35C	ACCAP7	ACCAP8	164	152	100		140	125	14500
* AL200SI				380-400		2000	10,30	75	60		CPM60FD	154	152	100		130	125
* AL201SI		2000	8,80			75	40	CPM40FD									

* Reattori alimentati a 400V | Ballast powered at 400V

