

General Characteristics

Built in mounting type ballast
Electric protection class I
Filled with polyester resin

Technical Features

Input voltage range 220-240Vac
Input frequency 50Hz
Reattore 2 poli
Energy efficiency ratio (EEI): A2
Winding in class H
Maximum working temperature max 130°C

Reference Standards

EN 55015 | EN 60923 | EN 61000-3-2
EN 61347-1 | EN 61347-2-9 | EN 62442-2

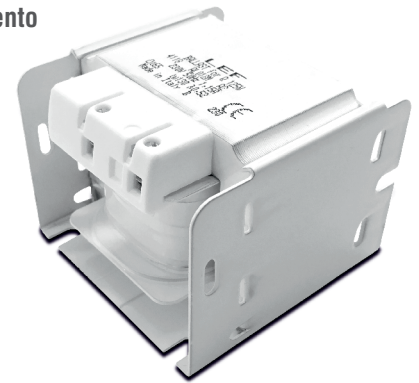
Caratteristiche Costruttive

Alimentatore da incorporare
Classe elettrica di protezione I
Impregnazione in resina poliester

Caratteristiche Tecniche

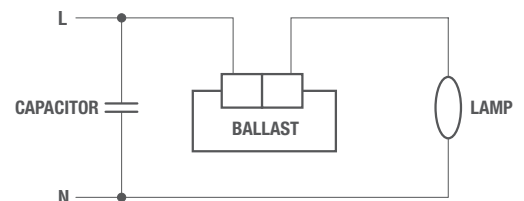
Tensione di ingresso 220-240Vac
Frequenza di ingresso 50Hz
Reattore a 2 poli
Indice di efficienza energetica (EEI): A2
Avvolgimento in classe H
Temperatura massima di funzionamento 130°C

Norme di Riferimento

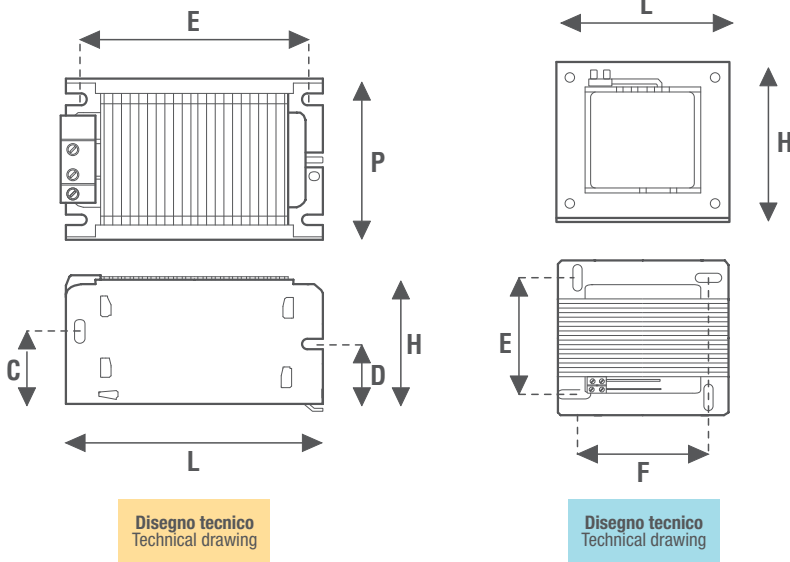


Wiring diagrams

Schema elettrico



**Lampada a Ioduri | Metal halide lamps
***Lampada al Sodio | Sodium lamps



Disegno tecnico
Technical drawing

Disegno tecnico
Technical drawing

CODICE CODE		Tensione di ingresso Input voltage (Vac)	Frequenza di rete Input frequency (Hz)	Potenza lampada Power lamp (W)	Corrente lampada Current lamp (A)	Δt (°C)	Condensatore Capacitor		Accenditore Ignitor (CODE)	Dimensioni Dimensions (mm)						Peso Weight (g)		
senza termica no thermoprotected	con termica thermoprotected						(μF)	(CODE)		L	P	H	C	D	E		F	
AL0035SI		220-240	50	35	0,53	55	6	CPI6,3C	ACCAP3	74	72	58	32	29	63	56	1250	
AL005SI				50	0,76	60	8	CPI8C	ACCAP6									
AL007SI	AL007SI/T			70	1,00	70	12	CPI12C	ACCAP3** ACCAP6***									
AL010SI	AL010SI/T			100	1,20	70	20	CPI20C	ACCAP3	103	72	58	32	29	63	56	2200	
AL015SI	AL015SI/T			150	1,80					132	72	58	32	29	63	56		2950
AL025SI	AL025SI/T			400	75	400	4-4,45	75	50	CPI50C	ACCAP7	122	99	100		106	73	4250
AL060SI						600	6,20	70	60	2xCPI30C		140	99	100		130	73	6200
AL100SI				380-400	70	1000	10,30	70	100	2xCPI50C	ACCAP2	134	152	100		110	125	10900
AL101SI						1000	8,20	70	65	1XCPI30C 1XCPI35C		127	122	100		106	99	7500
AL102SI						1000	9,50	70	85	1XCPI50C 1XCPI35C	ACCAP7	134	152	100		110	125	10900
* AL200SI						2000	10,30	75	60	CPM60FD		ACCAP8	164	152	100		140	125
* AL201SI						2000	8,80	75	40	CPM40FD	154		152	100		130	125	14000

* Reattori alimentati a 400V | Ballast powered at 400V

