

USER GUIDE

ETE105 - ETE150 - ETE210 - ETE250

ELECTRONIC TRANSFORMERS FOR HALOGEN LAMPS 12 Vac

PHASE CUT DIMMABLE



Technical Features

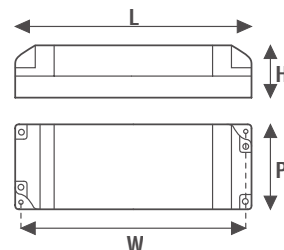
Input voltage range 220-240Vac
 Input frequency 50Hz
Voltage output 12Vac
Output frequency 40KHz
Phase-cut dimmable:
 - TRIAC Leading-Edge
 - IGBT Trailing Edge
 Open circuit Protection (OCP)
 Overload protection (OLP)
 Protection against overtemperature (OTP)
 Short circuit protection (SCP)
 Power factor correction (PFC) $\lambda \geq 0,99$
 Operating ambient temperature $T_a -10^\circ\text{C} + 50^\circ\text{C}$
 Max case temperature on $T_c 85^\circ\text{C}$ (90° only code ETE250)
 Terminal covers and cable clamp for 4-9mm cables diameter

Mode of Operation

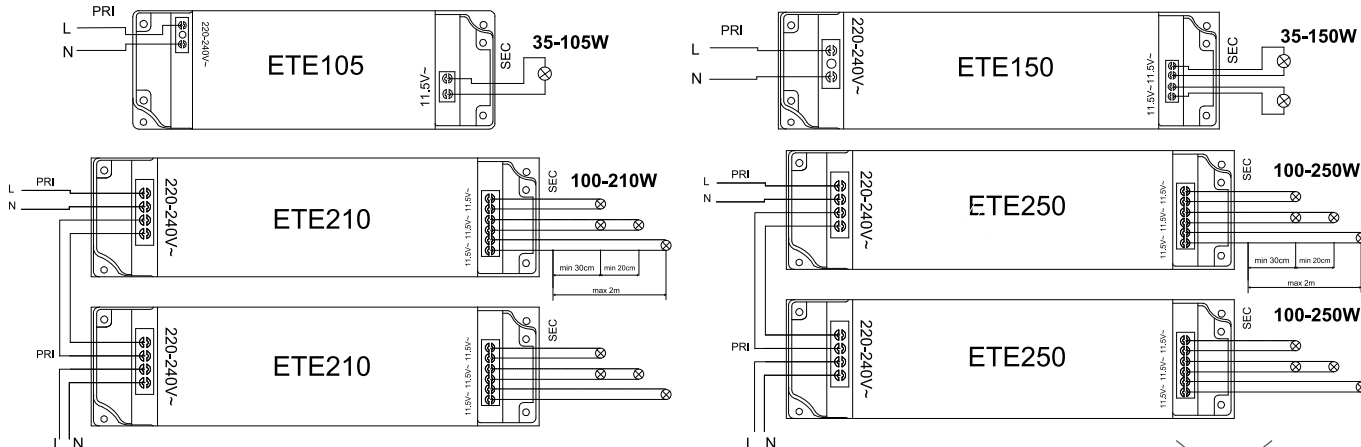
- The transformer can be used only with halogen lamps 12Vac.
- The transformer is only suitable for internal use.
- Brightness adjustment with dimmer to Trailing Edge(IGBT) and Leading Edge (TRIAC).
- The transformer must be mounted the closest as possible to halogen lamps.
- It must be respected the minimum distance of installation 30cm.
- The transformer does not need earth connection.
- Maximum distance between electronic transformer and lamp: 2m.

General Characteristics

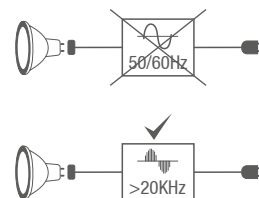
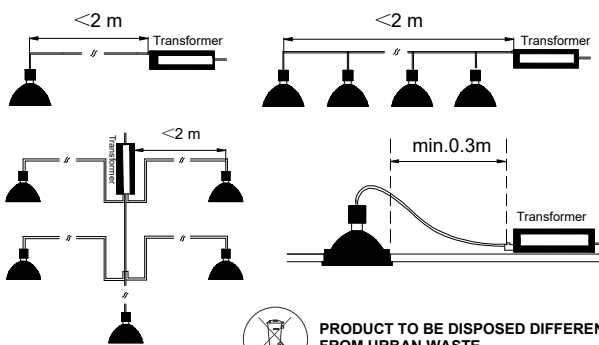
Plastic case
 Transformer for independent mounting
 Electric class protection II
 Protection degree IP20



CODICE CODE	Tensione di ingresso Input voltage (Vac)	Frequenza di rete Input frequency (Hz)	Potenza alogena Power halogen (W)	Tensione di uscita Output voltage (Vac)	Frequenza di uscita Output voltage (Khz)	Numero uscite Outputs number	PFC (λ)	Dimensioni Dimensions (mm)				Peso Weight (g)
								L	P	H	W	
ETE105	220-240	50	35-105	12	40	1	0,98	123	39	21	115	100
ETE150			35-150			2		153	41	31	144	175
ETE210			100-200			2		223	51	45	-	370
ETE250			100-250			3						



Installation distances to be respected



The installation of the product must be followed by qualified personal.

If the transformer is used for purposes other than the original or if it is connected incorrectly, LEF LIGHTING will not accept any responsibility for damages caused.

Reference Standards:

- EN 61347-1
- EN 61000-3-3
- EN 61347-2-2
- EN 55015
- EN 61000-3-2
- EN 61547
- EN 61047



PRODUCT TO BE DISPOSED DIFFERENTLY FROM URBAN WASTE
 AEE identification nr.IT18044000010321



MADE IN P.R.C.