

USER GUIDE

DLE1004PN, DLE1004PB, DLE1004TR

Table independent dimmers for incandescent lamps and LED lamps



www.leflighting.it

General Characteristics

Plastic case with connection
Push-button control (incorporated)

ATTENTION:

The installation of the product must be followed by qualified personnel.
If the product is used for purposes other than the original ones or if it is connected incorrectly, LEF Lighting S.R.L. will not accept any responsibility for damages caused.

Reference Standards

EN 61058-1
EN 61058-2-1

Technical Features

Input voltage range 220-240Vac
Input frequency 50+60Hz
Dimming control through:
- internal push-button
Suitable for:
- incandescent lamps
- halogen lamps
- dimmable compact fluorescent lamps (CFL)
- dimmable LED lamps
ON and OFF: quick pressure (<1sec)
Min -Max adjustment through slide potentiometer
Memorization of the last setting made (even in case of switching-off from controlled electrical socket)
Lighting indicator

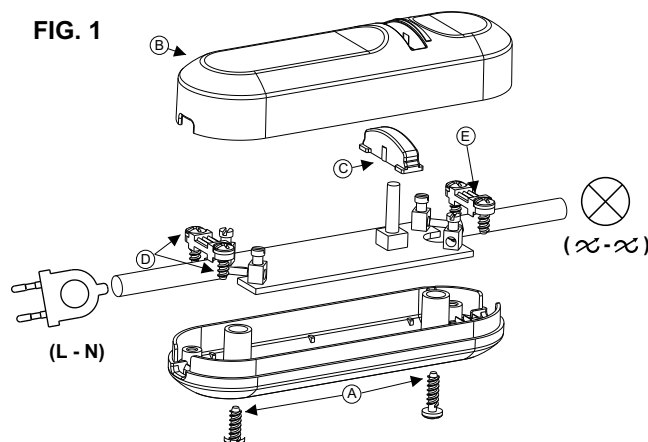
DIM
PUSH

CODICE CODE	Colore Color	RESISTIVO RESISTIVE Lampade ad incandescenza o alogene Incandescent or halogen lamps 230Vac	INDUTTIVO INDUCTIVE Trasformatore lamellare Laminated transformer 230/12Vac	INDUTTIVO INDUCTIVE Trasformatore toroidale Toroidal transformer 230/12Vac	Alimentatore elettronico con lampade ad incandescenza o alogene Electronic driver with incandescent or halogen lamps 230/12Vac	Alimentatore elettronico con lampade LED dimmabili Electronic driver with dimmable LED lamps 230/12Vac	Alimentatore elettronico dimmabile con uscita in CC/CV per LED Dimmable electronic driver with CC/CV output for LED	Lampade fluorescenti compatte dimmabili Dimmable compact fluorescent lamps 230Vac	Lampade LED dimmabili Dimmable LED lamps 230Vac	Moduli LED dimmabili Dimmable LED modules Seoul ACRICH 230Vac	Peso Weight (g)
DLE1004PN	Nero Black	4-150W	-	-	-	-	-	11-75W	4-60W	-	150
DLE1004PB	Bianco White										
DLE1004PTR	Trasparente Transparent										

ASSEMBLING INSTRUCTION (FIG. 1)

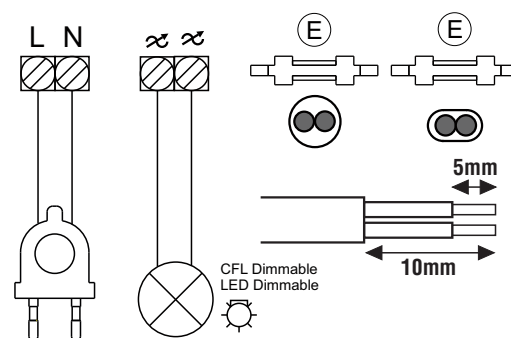
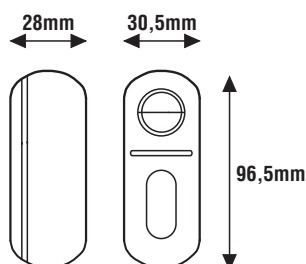
Unscrew the closing screws **A**
Take out the cover **B** and the button **C**
Unscrew the screws **D** of the cord anchorage **E**
Strip the cable to be connected respecting the quotes indicated
Connect supply cable to the terminals **L** and **N** of the electronic card.
Connect lamp cable to the terminal identified by symbol ∞ of the electronic card.
Mount cord anchorage **E** using the screws **D**.
Mount cover **B** and button **C**, screwing the screws **A**.

FIG. 1



USE INSTRUCTION

ON and OFF: quick pressure (less than 1 sec.)
MIN. and MAX. : Continuous pressure (at every release of the button pressure the direction of the dimming is inverted).
Memorization of the latest setting made.
It keeps the memory of last dimming, even in case of switching-off from a controlled electrical socket;
At ON, in order to help ignition of the lamp, it goes to the max. dimming value, after that it reaches latest memorized value.



MADE IN ITALY



PRODUCT TO BE DISPOSED
DIFFERENTLY FROM URBAN WASTE
AEE identification nr.IT18040000010321

LEF LIGHTING S.R.L. www.leflighting.it

Viale L.Ariosto 478/480 - 50019 Sesto Fiorentino (FI) - ITALY | Tel +39 055 421 77 27 - Fax +39 055 425 44 92