

USER GUIDE

EASYDIM, EASYDIMBT

UNIVERSAL DIMMERS CONTROLLED BY PUSH-BUTTON AND BLUETOOTH



Technical Features

Input voltage range 110-240Vac

Input frequency 50÷60Hz

Single channel dimmer with Phase-cut output (IGBT)

Dimming control through:

- **push-button (PUSH 230Vac)**

- **Bluetooth signal (LEF Lighting APP) (EASYDIMBT)**

Manageable power (see table)

«LEVEL MEMORY» function (non-excludable) and

«STATUS MEMORY» (at 0%, light OFF after black-out)

After a blackout, the device always positions itself in this mode:

- if the lights were off they will remain off.

- If the lights were on they will stay off.

Minimum brightness level calibration via hidden button

(on electronic circuit) accessible from a hole positioned on the opposite side of the terminals.

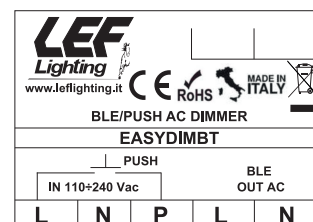
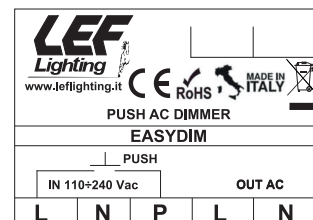
Open circuit Protection (OCP)

Overload protection (OLP)

Protection against overtemperature (OTP)

Short circuit protection (SCP)

Operating ambient temperature Ta -20°C ÷ +50°C



DIM BLE	DIM PUSH 230Vac	OUT IGBT
---------	-----------------	----------

CODICE CODE	Comando Command	RESISTIVO RESISTIVE Lampade ad incandescenza o alogene Incandescent or halogen lamps 230Vac	INDUTTIVO INDUCTIVE Trasformatore lamellare e toroidale Laminated and toroidal transformer 230/12Vac	Alimentatore elettronico con lampade ad incandescenza o alogene Electronic driver with incandescent or halogen lamps 230/12Vac	Alimentatore elettronico con lampade LED dimmerabili Electronic driver with dimmable LED lamps 230/12Vac	Alimentatore elettronico dimmerabile con uscita in CC/CV per LED Dimmable electronic driver with CC/CV output for LED	Lampade fluorescenti compatte dimmerabili CFL Dimmable compact fluorescent lamps CFL 230Vac	Lampade LED dimmerabili Dimmable LED lamps 230Vac	Moduli LED dimmerabili Dimmable LED modules Seoul ACRICH 230Vac	Strip LED dimmerabili Dimmable Strip LED 230Vac	Peso Weight (g)
EASYDIM	PUSH	230W	-	115W	115W	115W	115W	115W	230W	230W	30
EASYDIMBT	PUSH BLUETOOTH										

In case of using the product with 110Vac input voltage, the power must be reduced by 50%

General Characteristics

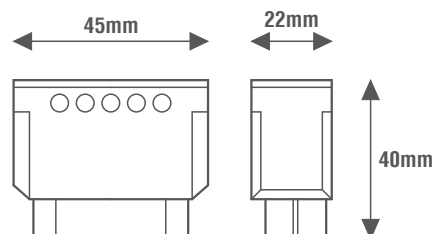
Plastic case with connection

Control push

Control via Bluetooth (LEF Lighting APP)

Protection degree IP20

4/5 wires system



LEF Lighting APP

The features implemented are: switching on, switching off and brightness level control for each light point.

Possibility to group and control multiple light points with a simple command.

Definition and restoration of favourite light scenarios.

System management from a single simplified user interface.

LEF Lighting APP functionality (*depending on the device, only some functions may be available).

Management of 1-channel or 4-channels dimmers with different operating modes:

- Single channel,
- 4 synchronized channels,
- RGB (3 Channels or 3 zones),
- RGB + White (4 Channels or 4 zones),
- Dynamic White.

Android



iOS



- To install the APP on your Apple or Android device, frame the desired QRCode to be automatically redirected to LEF Lighting APP product sheet.

Reference Standards

EN 55015

EN 61000-3-2

EN 61000-3-3

EN 61347-1

EN 61347-2-13

EN 61547

EN 62384



PRODUCT TO BE DISPOSED
DIFFERENTLY FROM URBAN WASTE
AEE Identification nr.IT18040000010321



MADE IN ITALY

LEF LIGHTING S.R.L. | www.leflighting.it

Via Rodolfo Morandi, 9/11 - 50019 Sesto Fiorentino (FI) - ITALY | Tel +39 055 421 77 27 - Fax +39 055 4217719

USER GUIDE

EASYDIM, EASYDIMBT

WIRING DIAGRAMS



5 WIRES SYSTEM

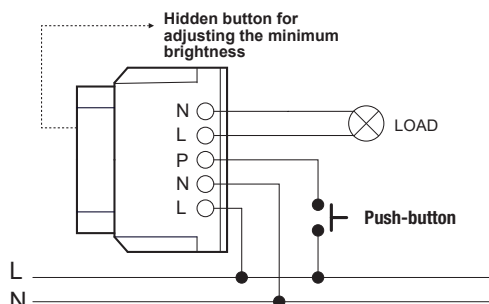
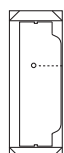


FIG.1



Hidden button for adjusting the minimum brightness

The dimmer must be connected according to the diagram shown in FIG. 1. In particular:

- connect the power supply to the input terminals (IN) L (PHASE) and N (NEUTRAL),
- connect the load between the output terminals (OUT AC) L (PHASE) and N (NEUTRAL),
- connect a normally open (NO) button between L (PHASE) and the terminal P (PUSH).

PUSH Interface Operation

Single Click (quick pressure (<1sec))

- Turns on or off the output (ON/OFF)

Double Click (quick pressure (<1sec))

- Sets the maximum brightness (output=100%)

Long Press (long press (>1sec))

- If the dimmer is in OFF state, sets the output to the minimum value (default=1%).
- If the dimmer is in ON state, the long press allows the output dimming (increase/decrease).

4 WIRES SYSTEM

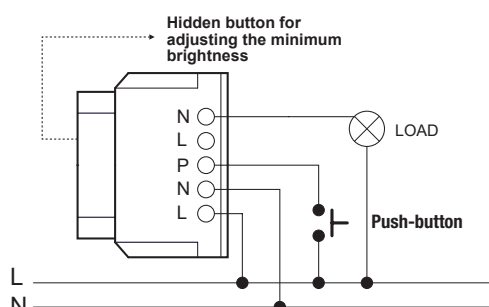


FIG.2

The dimmer must be connected according to the diagram shown in FIG. 2. In particular:

- connect the power supply to the input terminals (IN) L (PHASE) and N (NEUTRAL),
- connect the load between the output terminal (OUT AC) N (NEUTRAL) and L (PHASE of the electrical system),
- connect a normally open (NO) button between L (PHASE) and the terminal P (PUSH).

P.N.: IN THIS CONFIGURATION, THE LOAD IS NOT PROTECTED BY THE INTERNAL FUSE

EASYDIM OR EASYDIMBT CONNECTION DIAGRAM WITH MONOSTABLE RELAY

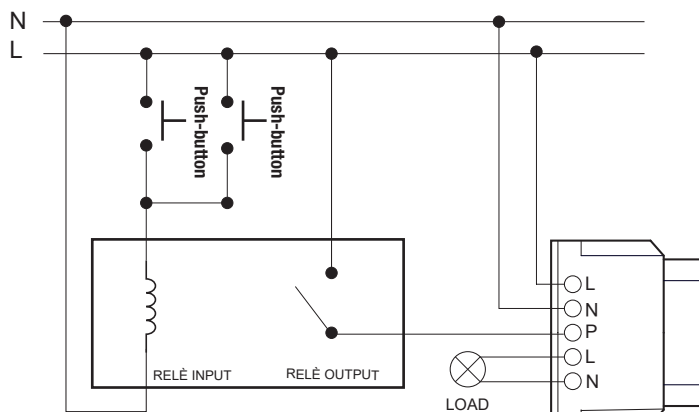


FIG.3

In the event that malfunctions are found regarding false positives or negatives on the BUTTON (due to very long cables or disturbances on the system), it is recommended to install a monostable relay connected locally to the dimmer (FIG. 3).

For correct operation it is important to keep the connection cable between the BUTTON and the DIMMER as short as possible.