

USER GUIDE

LEPC4024IP67, LEPC6024IP67 LEPC10024IP67, LEPC15024IP67

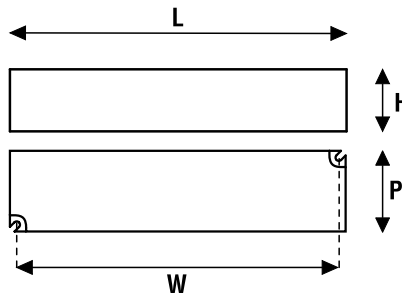
Constant voltage LED drivers (CV) IP67



www.lef Lighting.it

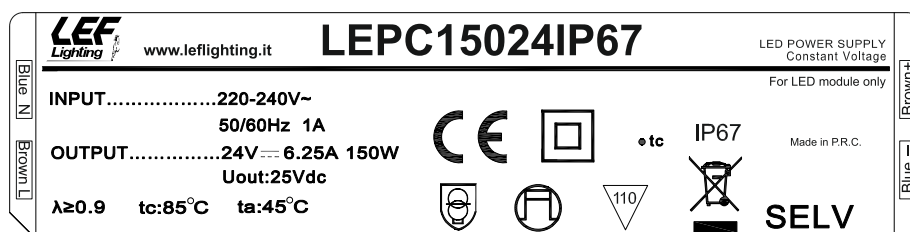
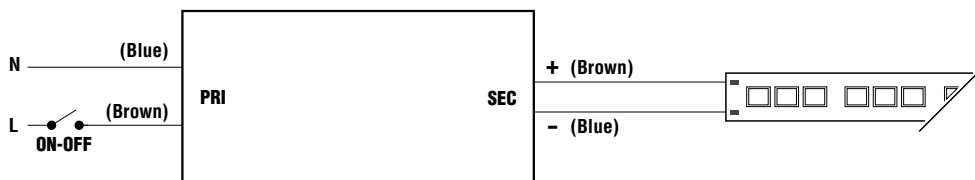
General Characteristics

Plastic case
Completely sealed electronic board
Electric class protection II
Protection degree IP67
H05RN-F cables lenght 200mm
Driver for external use



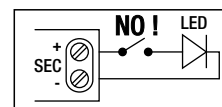
EE
89%

CODICE CODE	Tensione di ingresso Input voltage (Vac)	Frequenza di rete Input frequency (Hz)	Potenza di uscita Output power (W)	Tensione di uscita Output voltage (Vdc)	Corrente di uscita Output current (mA)	PFC (λ)	CC CV	Dimensioni Dimensions (mm)				Peso Weight (g)
								L	P	H	W	
LEPC4024IP67	220-240	50÷60	40	24	1666	0,9	CV	150	40	30	140	320
LEPC6024IP67			60		2500			150	40	30	140	320
LEPC10024IP67			100		4160			166	43	33	153	400
LEPC15024IP67			150		6250			193	52	37	180	640



Technical Features

Input voltage range 220-240Vac
Input frequency 50÷60Hz
Constant voltage output 24Vdc
Energy Efficiency (EE):
- 84% (LEPC4024IP67)
- 87% (LEPC6024IP67)
- 88% (LEPC10024IP67)
- 89% (LEPC15024IP67)
Overload protection (OLP)
Protection against overtemperature (OTP)
Short circuit protection (SCP)
Operating ambient temperature Ta -20°C÷+45°C
Max case temperature on Tc 85°C



Device not suitable for
no-load operation.

ATTENTION:

The installation of the product must be followed by qualified personnel.
If the product is used for purposes other than the original ones or if it is connected incorrectly, LEF Lighting S.R.L. will not accept any responsibility for damages caused.

Reference Standards:

EN 55015
EN 61000-3-2
EN 61000-3-3
EN 61347-1
EN 61347-2-13
EN 61547



PRODUCT TO BE DISPOSED DIFFERENTLY
FROM URBAN WASTE
AEE Identification nr.IT18040000010321



MADE IN P.R.C.

