

# USER GUIDE

## LEMC60SLIMD

Dimmable constant multicurrent LED driver (CC) with push-button, DALI and 1-10V signal control



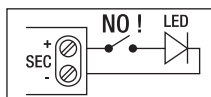
### General characteristics

Plastic case (SLIM)  
Driver for independent mounting  
Electric class protection II  
Protection degree IP20

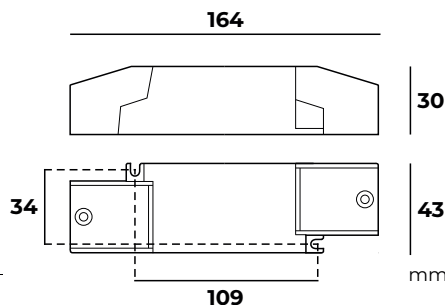
**Psb**  
0,5W



**EE**  
90%



**N.B.**  
Power supply not suitable  
for no-load operation



30 [www.lef Lighting.it](http://www.lef Lighting.it)

**DIP SWITCH**  
1 2 3 4

**LED COB**

CODICE CODE	Comando Control	Potenza di uscita Output power (W)	Tensione di uscita Output voltage (Vdc)	Corrente di uscita Output current (mA)	Uscita DIP switch DIP switch output				PFC  (λ)	Peso Weight (g)
					1	2	3	4		
LEMC60SLIMD	PUSH DALI 1-10V POT22KΩ	52,5	3-42	1250	-	-	-	-	0,93	250
		54,6		1300	-	-	-	ON	0,94	
		56,7		1350	-	-	ON	-	0,94	
		58,8		1400	-	-	ON	ON	0,95	
		60,9		1450	-	ON	-	-	0,95	
		60	3-40	1500	-	ON	-	ON	0,96	
		60,4	3-39	1550	-	ON	ON	-		
		60,8	3-38	1600	-	ON	ON	ON		
		61	3-37	1650	ON	-	-	-		
		61,2	3-36	1700	ON	-	-	ON		
		61,2	3-35	1750	ON	-	ON	-		
		61,2	3-34	1800	ON	-	ON	ON		
		61	3-33	1850	ON	ON	-	-		
		60,8	3-32	1900	ON	ON	-	ON		
		60,4	3-31	1950	ON	ON	ON	-		
		60	3-30	2000	ON	ON	ON	ON		

### Technical features

Input voltage range 220-240Vac | Input frequency 50÷60Hz

**Constant current output: 1250÷2000mA**

(settings by dip-switch)

**Factory settings: 1250mA**

**Brightness adjustment through:**

- push-button (PUSH 230Vac) - DALI signal  
- 1-10V signal - 22Kohm potentiometer

«LEVEL MEMORY» and «STATUS MEMORY» function

Possibility of syncro of more drivers together (max10)

Energy Efficiency (EE) 90%

Open circuit protection (OCP)

Protection against overtemperature (OTP)

Short circuit protection (SCP)

Power factor correction (PFC)  $\lambda \geq 0,96$

Operating ambient temperature  $T_a -20^{\circ}\text{C} \div +40^{\circ}\text{C}$

Max case temperature on  $T_c 90^{\circ}\text{C}$

#### ATTENTION:

The installation of the product must be followed by qualified personnel.  
If the product is used for purposes other than the original ones or if it is connected incorrectly, LEF Lighting S.R.L. will not accept any responsibility for damages caused.

### Reference standards

EN 55015  
EN 61000-3-2  
EN 61000-3-3  
EN 61347-1  
EN 61347-2-13  
EN 61547  
EN 62384  
EN 62386-101  
EN 62386-102  
EN 62386-207  
EN 62386-251  
EN 62386-252  
EN 62386-253

LEMC60SLIMD												For LED modules only			
Constant current Dimmable LED Driver												DALI 2 DT6			
PRI: 220-240VAC 0/50/60Hz Max.0.30A												SEC: 0.5-1.5"			
SEC: 1250-2000mA 3-42VDC $t_a=40^{\circ}\text{C}$												DC: 220-240V U-OUT: 59VDC • $t_c=90^{\circ}\text{C}$			
Wire preparation												SELV			
PRI: 0.5-1.5" SEC: 0.5-1.5"												ON OFF			
N												1 2 3 4			
L												ON ON ON ON			
DA												ON ON ON ON			
DA												ON ON ON ON			
EL												ON ON ON ON			



PRODUCT TO BE DISPOSED  
DIFFERENTLY FROM URBAN WASTE  
AEE identification  
nr.IT1804000010321



# USER GUIDE

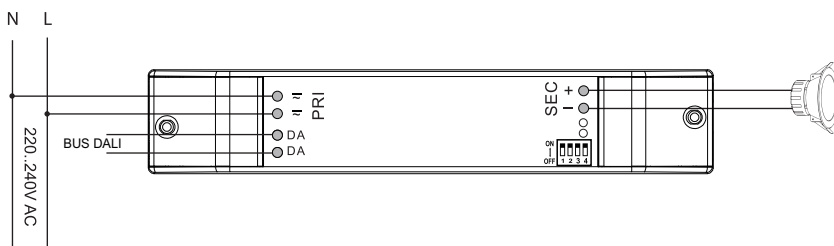
## LEMC60SLIMD

Dimmable constant multicurrent LED driver (CC) with push-button, DALI and 1-10V signal control



### DALI mode

1



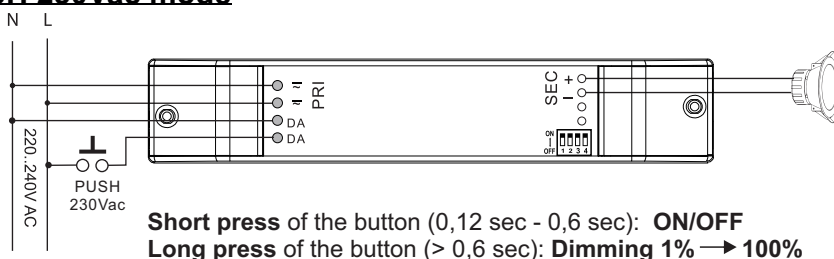
DALI  
DT6

DALI  
2

DIM  
DALI

### PUSH 230Vac mode

2



**Short press of the button (0,12 sec - 0,6 sec): ON/OFF**  
**Long press of the button (> 0,6 sec): Dimming 1% → 100%**

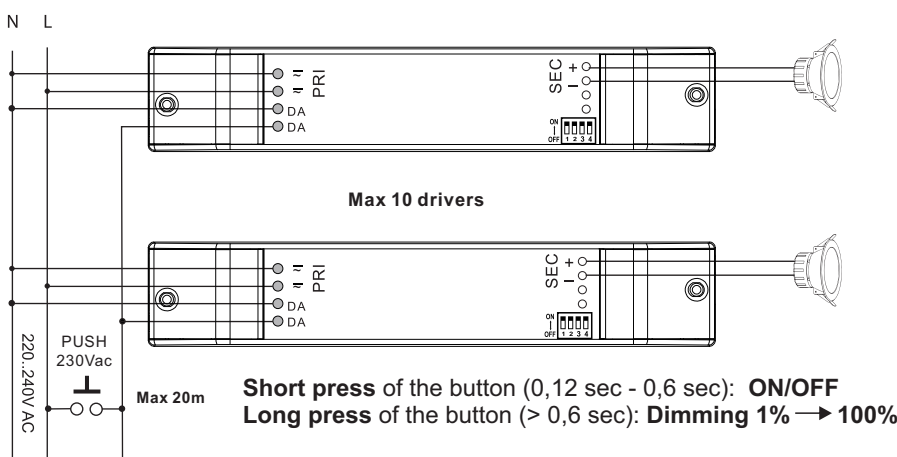
#### Setting dimming time (1-100%)

The dimming speed can be changed from 3 sec. (default setting) to 6 sec. by prolonged pressure on the button ( $\geq 20$  sec.). you have to repeat the procedure to reset the dimming speed to the default 3 sec.

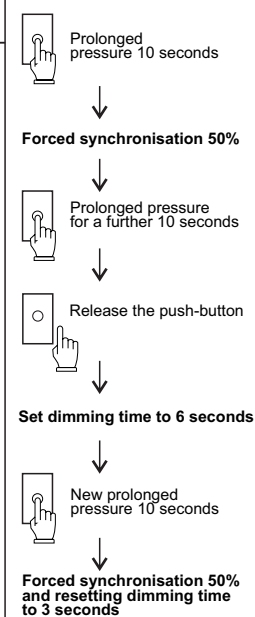
DIM  
PUSH  
230Vac

### SYNCRO by PUSH 230Vac:

3



**Short press of the button (0,12 sec - 0,6 sec): ON/OFF**  
**Long press of the button (> 0,6 sec): Dimming 1% → 100%**



#### Setting dimming time (1-100%)

The dimming speed can be changed from 3 sec. (default setting) to 6 sec. by prolonged pressure on the button ( $\geq 20$  sec.).

You have to repeat the procedure to reset the dimming speed to the default 3 sec.

#### Synchronization procedure

With a long press of the button (10 seconds), all drivers will be synchronized to the dimming level of 50%.

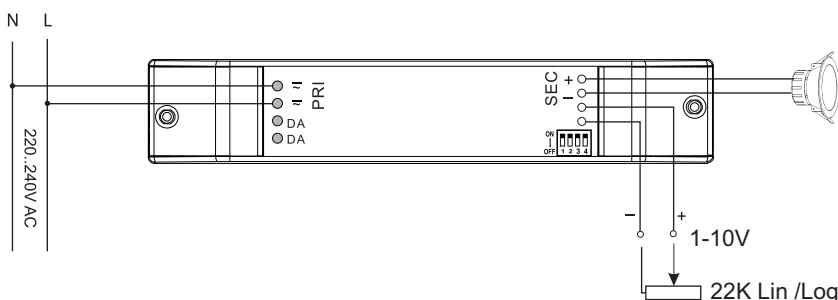
DIM  
PUSH  
230Vac

SYNCRO  
by  
CABLE

MAX  
10  
SLAVE

### 1-10V mode

4



DIM  
1-10V

DIM  
POT  
22K $\Omega$