

USER GUIDE

LEMC60SLIM

Constant multicurrent LED driver (CC)

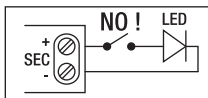


General characteristics

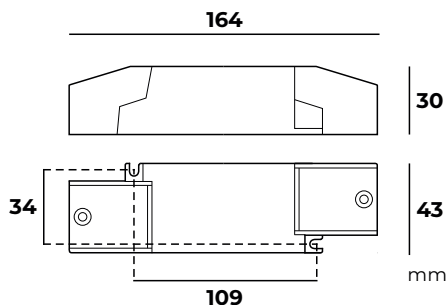
Plastic case (SLIM)
Driver for independent mounting
Electric class protection II
Protection degree IP20



EE
90%



N.B.
Power supply not suitable
for no-load operation



www.lef-lighting.it

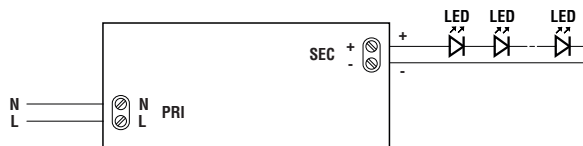
DIP
SWITCH

LED
COB

CODICE CODE	Comando Control	Potenza di uscita Output power (W)	Tensione di uscita Output voltage (Vdc)	Corrente di uscita Output current (mA)	Uscita DIP switch DIP switch output				PFC (λ)	Peso Weight (g)
					1	2	3	4		
LEMC60SLIM	ON-OFF	52,5	3-42	1250	-	-	-	-	0,93	250
		54,6		1300	-	-	-	ON	0,94	
		56,7		1350	-	-	ON	-	0,94	
		58,8		1400	-	-	ON	ON	0,95	
		60,9		1450	-	ON	-	-	0,95	
		60	3-40	1500	-	ON	-	ON	0,96	
		60,4	3-39	1550	-	ON	ON	-		
		60,8	3-38	1600	-	ON	ON	ON		
		61	3-37	1650	ON	-	-	-		
		61,2	3-36	1700	ON	-	-	ON		
		61,2	3-35	1750	ON	-	ON	-		
		61,2	3-34	1800	ON	-	ON	ON		
		61	3-33	1850	ON	ON	-	-		
		60,8	3-32	1900	ON	ON	-	ON		
		60,4	3-31	1950	ON	ON	ON	-		
		60	3-30	2000	ON	ON	ON	ON		

Reference standards

EN 55015
EN 61000-3-2
EN 61000-3-3
EN 61347-1
EN 61347-2-13
EN 61547-1
EN 62384



ATTENTION:

The installation of the product must be followed by qualified personnel.
If the product is used for purposes other than the original ones or if it is connected incorrectly, LEF Lighting S.R.L. will not accept any responsibility for damages caused.

Technical features

Input voltage range 220-240Vac

Input frequency 50÷60Hz

Constant current output: 1250÷2000mA

(settings by dip-switch)

Factory settings: 1250mA

Energy Efficiency (EE) 90%

Open circuit protection (OCP)

Protection against overtemperature (OTP)

Short circuit protection (SCP)

Power factor correction (PFC) $\lambda \geq 0,96$

Operating ambient temperature $T_a -20^{\circ}\text{C} \div +40^{\circ}\text{C}$

Max case temperature on $T_c 90^{\circ}\text{C}$

MADE IN P.R.C.

LEF Lighting		LEMC60SLIM		CE SELV		110	
Constant current LED Driver		PRI: 220-240VAC 0/50/60Hz		Max. 0.30A		U-OUT: 59V	
www.lef-lighting.it		SEC: 1250-2000mA		3-42VDC		DC: 220-240V	
For LED modules only		PF		PF		ON	
wire preparation		1 2 3 4		1 2 3 4		OFF	
52.5		1250 0.45C-0.93C		61.0 1650 0.55C-0.96		ON	
54.6		1300 0.48C-0.94C		61.2 1700 0.57C-0.96		ON	
56.7		1350 0.50C-0.94C		61.2 1750 0.58C-0.96		ON	
58.8		1400 0.52C-0.95		61.2 1800 0.59C-0.96		ON	
60.9		1450 0.52C-0.95		61.0 1850 0.59C-0.96		ON	
60.0		1500 0.52C-0.96		60.8 1900 0.60C-0.96		ON	
60.4		1550 0.52C-0.96		60.4 1950 0.61C-0.96		ON	
60.8		1600 0.54C-0.96		60.0 2000 0.61C-0.96		ON	



PRODUCT TO BE DISPOSED
DIFFERENTLY FROM URBAN WASTE
AEE identification
nr.IT1804000010321



LEF LIGHTING S.R.L. www.lef-lighting.it

Viale L.Ariosto 478/480 - 50019 Sesto Fiorentino (FI) - ITALY | Tel +39 055 421 77 27 - Fax +39 055 425 44 92