

USER GUIDE LEMC44SLIMD

Dimmable constant multicurrent LED driver (CC) with push-button and DALI signal control



General Characteristics

Plastic case (SLIM)
Driver for independent mounting
Electric class protection II
Protection degree IP20

		LEMC44SLIMD Constant current LED Driver		t _c =90°C t _a =40°C	
PRI: 220-240VAC 0/50/60Hz Max. 0.23A		U-OUT: 59VDC Max. 44.1W		Range of application: DC 180-280V	
SEC: 300-1050mA 9-49VDC		t _c =		SELV	
PF 1 2 3 4		PF 1 2 3 4		IP20	
14,7 300 0,86C		34,3 700 0,94C		DALI 2	
17,15 350 0,87C		36,0 750 0,94C		DT6	
19,6 400 0,88C		38,0 800 0,95C			
22,05 450 0,89C		40,5 900 0,95C			
24,5 500 0,90C		42,0 1000 0,95C			
26,95 550 0,91C		44,1 1050 0,95C			
29,4 600 0,92C					
31,85 650 0,93C					
34,3 700 0,94C					
36 750 0,95C					
38,25 800 0,95C					
40,5 900 0,95C					
39,9 950 0,95C					
42 1000 0,95C					
44,1 1050 0,95C					



www.lef-lighting.it

CODICE CODE	Tensione di ingresso Input voltage (Vac)	Frequenza di rete Input frequency (Hz)	Potenza di uscita Output power (W)	Comando Command	Tensione di uscita Output voltage (Vdc)	Corrente di uscita Output current (mA)	PFC (λ)	CC CV	Peso Weight (g)
LEMC44SLIMD	220-240	50÷60	14,7	PUSH DALI	9-49	300	0,86	CC	180
			17,15			350	0,87		
			19,6			400	0,88		
			22,05			450	0,89		
			24,5			500	0,90		
			26,95			550	0,91		
			29,4			600	0,92		
			31,85			650	0,93		
			34,3			700	0,94		
			36		9-48	750	0,95		
			38,25		9-45	800			
			40,5			850			
			39,9			900			
			42		9-42	950			
			44,1			1000			
						1050			

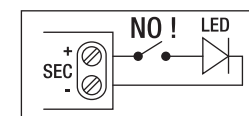
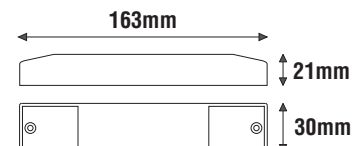
Reference Standards

EN 61347-1
EN 61347-2-13
EN 62384
EN 62386-207
EN 62386-251
EN 62386-252
EN 62386-253

LEMC44SLIMD



OUTPUT DIP-SWITCH		1	2	3	4
Potenza Power (W)	Corrente MAX MAX Current (mA)				
14,7	300	-	-	-	-
17,15	350	-	-	-	ON
19,6	400	-	-	ON	-
22,05	450	-	-	ON	ON
24,5	500	-	ON	-	-
26,95	550	-	ON	-	ON
29,4	600	-	ON	ON	-
31,85	650	-	ON	ON	ON
34,3	700	ON	-	-	-
36	750	ON	-	-	ON
38,25	800	ON	-	ON	-
40,5	850	ON	ON	-	-
39,9	900	ON	ON	-	ON
42	1000	ON	ON	ON	-
44,1	1050	ON	ON	ON	ON



N.B.

Power supply not suitable for no-load operation.

ATTENTION:

The installation of the product must be followed by qualified personnel. If the product is used for purposes other than the original ones or if it is connected incorrectly, LEF Lighting S.R.L. will not accept any responsibility for damages caused.



PRODUCT TO BE DISPOSED
DIFFERENTLY FROM URBAN WASTE
AEE identification nr.IT1804000010321



LEF LIGHTING S.R.L. www.lef-lighting.it

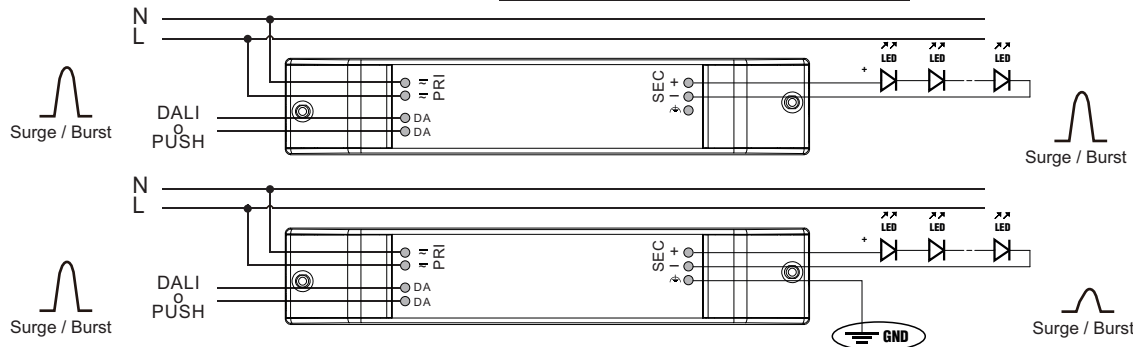
Viale L.Ariosto 478/480 - 50019 Sesto Fiorentino (FI) - ITALY | Tel +39 055 421 77 27 - Fax +39 055 425 44 92

USER GUIDE LEMC44SLIMD

Dimmable constant multicurrent LED driver (CC) with push-button and DALI signal control



GROUND terminal function



The earth terminal has no safety function, but only a performance-improving function (functional earth).
The earth connection (GND) is recommended to improve the following problems:

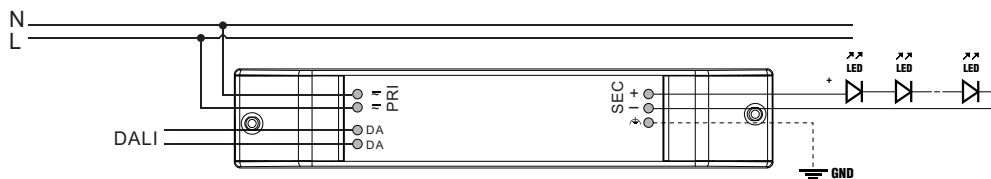
- Electromagnetic interference (EMI)

- LED module on (residual brightness) in standby mode

In general, it is recommended to earth the LED Driver if the LED module is mounted on earthed luminaire parts respectively heat sinks and thereby representing a high capacity against earth.

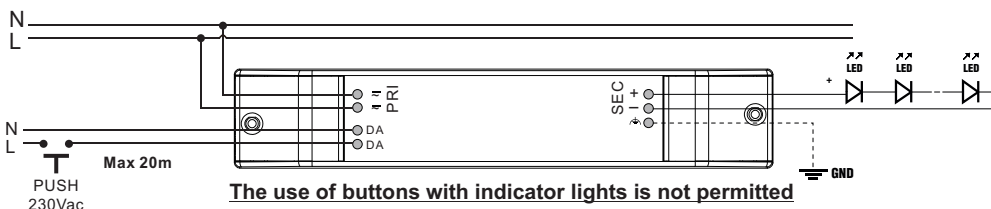
This earthing connection cancels out the residual brightness of the LED module in standby, which can occur due to capacitive leakage currents from the LED module on earthed luminaire parts (such as the heat sink). This mainly affects high-efficiency and large-area LED systems installed in luminaires with class I protection.

DALI mode

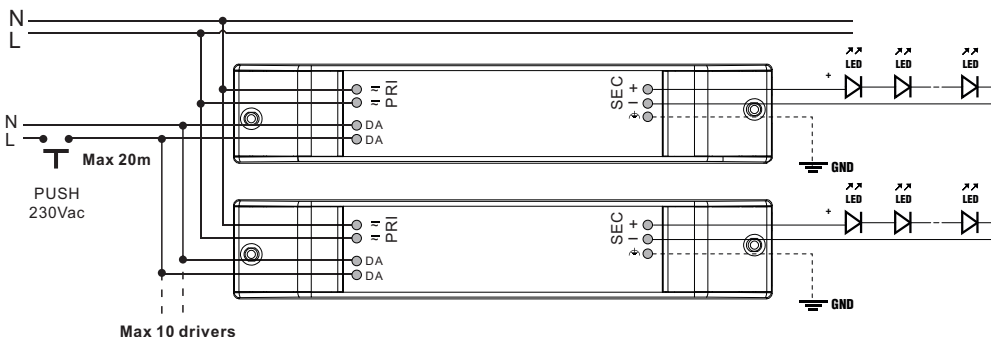


DALI DT6	DALI 2	DIM DALI
----------	--------	----------

PUSH 230Vac mode



SYNCHRONIZATION via 230Vac BUTTON:



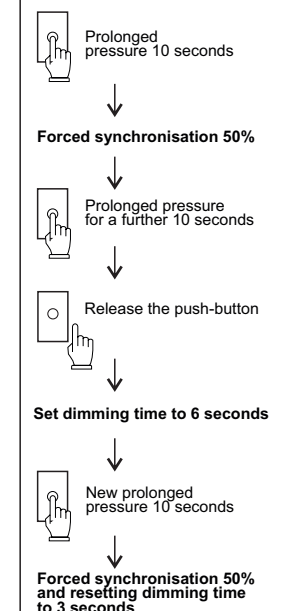
Short button pressure (0.12 sec - 0,6 sec): **ON/OFF**
Long button pressure (> 0.6 sec): **Dimming 1% → 100%**

Synchronisation procedure

With prolonged pressure on the button (10 seconds), all drivers will be synchronised to the 50% dimming level.

Setting dimming time (1-100%)

The dimming speed can be changed from 3 sec. (default setting) to 6 sec. by prolonged pressure on the button (≥ 20 sec.). you have to repeat the procedure to reset the dimming speed to the default 3 sec.



DIM PUSH 230Vac	SYNCR by CABLE	MAX 10 SLAVE
-----------------	----------------	--------------