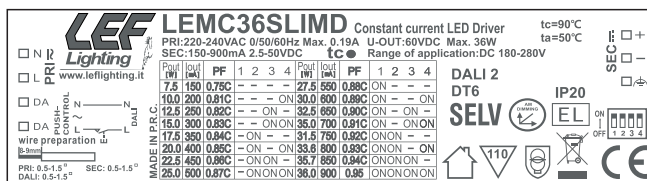


## Dimmable constant multicurrent LED driver (CC) with push-button and DALI signal control



Plastic case (SLIM)  
Driver for independent mounting  
Electric class protection II  
Protection degree IP20



**www.lelighting.it**

CODICE CODE	Tensione di ingresso Input voltage (Vac)	Frequenza di rete Input frequency (Hz)	Potenza di uscita Output power (W)	Comando Command	Tensione di uscita Output voltage (Vdc)	Corrente di uscita Output current (mA)	PFC (λ)	CC CV	Peso Weight (g)
LEMC36SLIMD	220-240	50÷60	7,5	PUSH DALI	2,5-50	150	0,77	CC	160
			10			200	0,81		
			12,5			250	0,82		
			15			300	0,83		
			17,5			350	0,84		
			20			400	0,85		
			22,5			450	0,86		
			25			500	0,87		
			27,5			550	0,88		
			30			600	0,89		
			32,5			650	0,90		
			35			700	0,91		
			31,5			2,5-42	750		
			33,6		800		0,93		
			35,7		850		0,94		
			36		2,5-40	900	0,95		

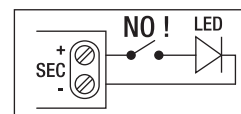
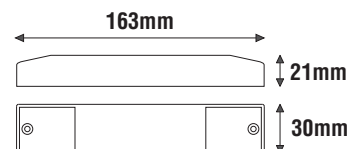
EN 61347-1  
EN 61347-2-13  
EN 62384  
EN 62386-207  
EN 62386-251  
EN 62386-252  
EN 62386-253



LEMC36SLIMD



OUTPUT DIP-SWITCH					
Potenza Power (W)	Corrente MAX MAX Current (mA)	1	2	3	4
7.5	150	-	-	-	-
10	200	-	-	-	ON
12.5	250	-	-	ON	-
15	300	-	-	ON	ON
17.5	350	-	ON	-	-
20	400	-	ON	-	ON
22.5	450	-	ON	ON	-
25	500	-	ON	ON	ON
27.5	550	ON	-	-	-
30	600	ON	-	-	ON
32.5	650	ON	-	ON	-
35	700	ON	-	ON	ON
31.5	750	ON	ON	-	-
33.6	800	ON	ON	-	ON
35.7	850	ON	ON	ON	-
36	900	ON	ON	ON	ON



**N.B.**

Power supply not suitable for  
no-load operation.

**ATTENTION:**

The installation of the product must be followed by qualified personnel. If the product is used for purposes other than the original ones or if it is connected incorrectly, LEF Lighting S.R.L. will not accept any responsibility for damages caused.

Input voltage range 220-240Vac  
Input frequency 50÷60Hz  
**Constant current output 150÷900mA**  
(settings by dip-switch)  
**Factory setting: 150mA**

**Brightness adjustment through:**

- push-button (PUSH 230Vac)

- DALI signal

«LEVEL MEMORY» and «STATUS MEMORY» function  
Synchronization of multiple power supplies via cable (max 10)

Energy Efficiency (EE) 88%

Open circuit Protection (OCP)  
Protection against overtemperature (OTP)

### Short circuit protection (SCP)

Power factor correction (PFC)  $\lambda \geq 0,95$ 

Operating ambient temperature  $T_a$   $-20^{\circ}\text{C} \div +50^{\circ}\text{C}$

Max case temperature on Tc 90°C

**MADE IN P.R.C.**



PRODUCT TO BE DISPOSED  
DIFFERENTLY FROM URBAN WASTE  
AEE identification nr.IT18040000010321



**LEF LIGHTING S.R.L.**      [www.leflighting.it](http://www.leflighting.it)

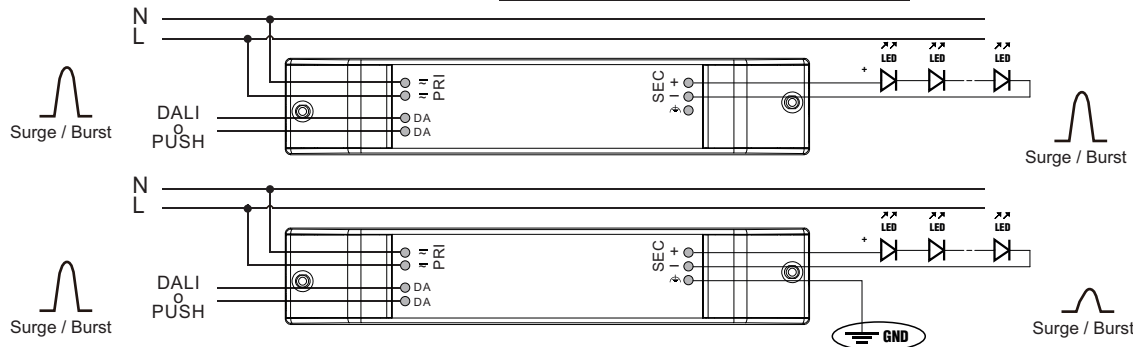
**Viale L.Ariosto 478/480 - 50019 Sesto Fiorentino (FI) - ITALY | Tel +39 055 421 77 27 - Fax +39 055 425 44 92**

# USER GUIDE LEMC36SLIMD

Dimmable constant multicurrent LED driver (CC) with push-button and DALI signal control



## GROUND terminal function



The earth terminal has no safety function, but only a performance-improving function (functional earth).

The earth connection (GND) is recommended to improve the following problems:

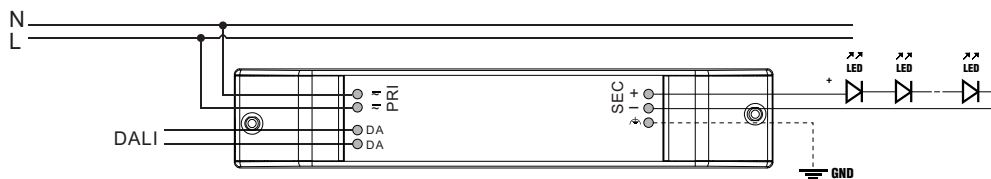
- **Electromagnetic interference (EMI)**

- **LED module on (residual brightness) in standby mode**

In general, it is recommended to earth the LED Driver if the LED module is mounted on earthed luminaire parts respectively heat sinks and thereby representing a high capacity against earth.

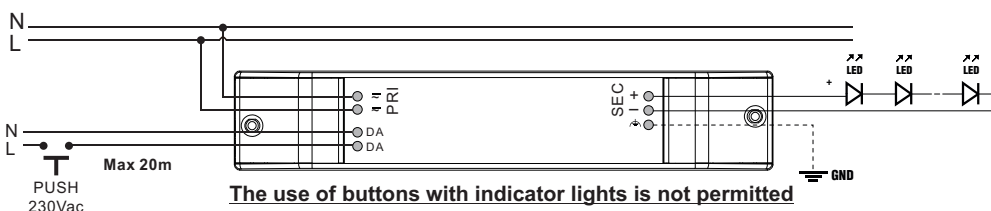
This earthing connection cancels out the residual brightness of the LED module in standby, which can occur due to capacitive leakage currents from the LED module on earthed luminaire parts (such as the heat sink). This mainly affects high-efficiency and large-area LED systems installed in luminaires with class I protection.

## DALI mode



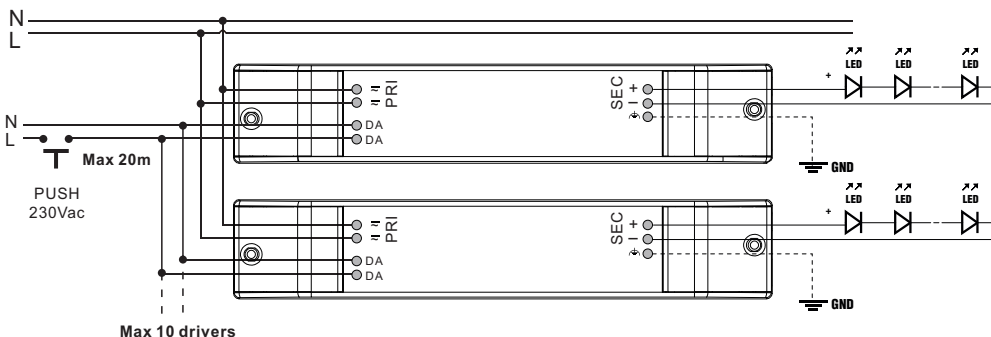
DALI DT6	DALI 2	DIM DALI
----------	--------	----------

## PUSH 230Vac mode



The use of buttons with indicator lights is not permitted

### SYNCHRONIZATION via 230Vac BUTTON:



Short button pressure (0.12 sec - 0,6 sec): **ON/OFF**

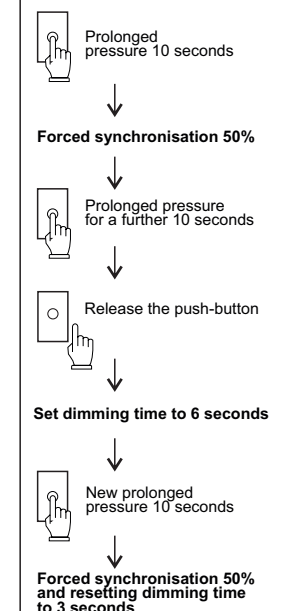
Long button pressure (> 0.6 sec): **Dimming 1% → 100%**

### Synchronisation procedure

With prolonged pressure on the button (10 seconds), all drivers will be synchronised to the 50% dimming level.

### Setting dimming time (1-100%)

The dimming speed can be changed from 3 sec. (default setting) to 6 sec. by prolonged pressure on the button (≥ 20 sec.). you have to repeat the procedure to reset the dimming speed to the default 3 sec.



DIM PUSH 230Vac	SYNCR by CABLE	MAX 10 SLAVE
-----------------	----------------	--------------